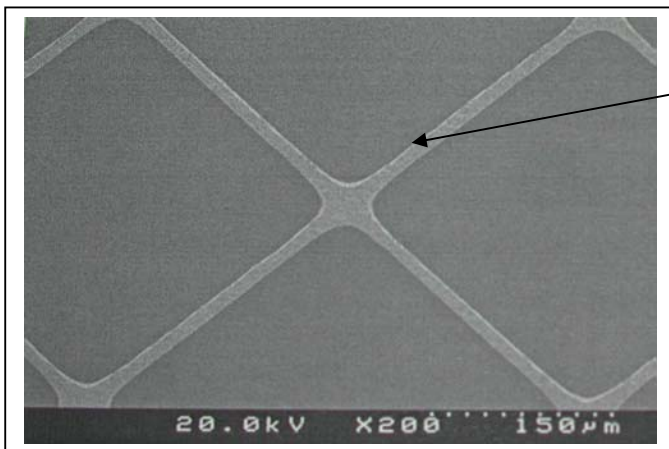
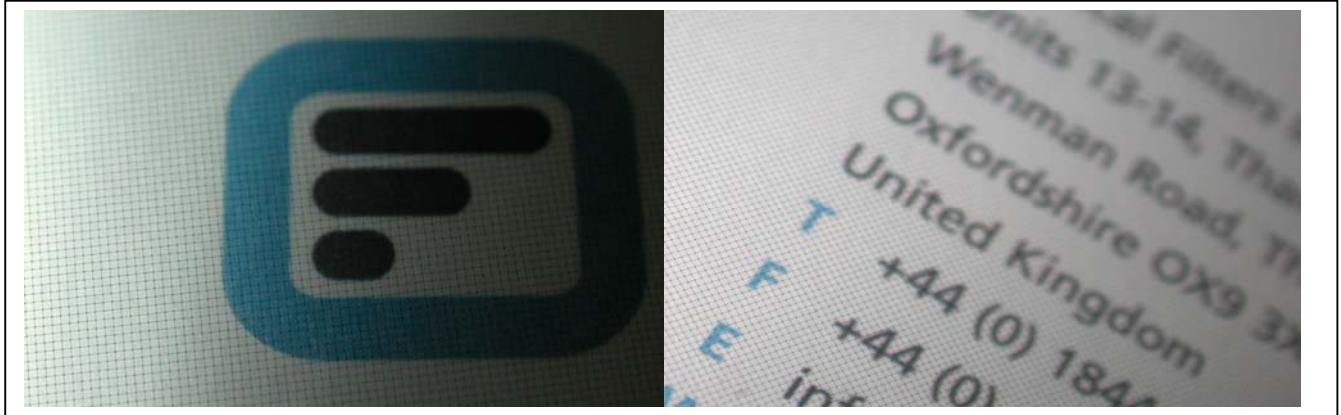


# MicroMesh

Micro Mesh is an etched copper grid for electromagnetic shielding of LCD displays



The etched manufacturing process provides a consistent grid matrix:

- Line width is min 0.010mm
- Space between line centres is 0.300mm

The front surface has a black mask and the copper grid is exposed to the rear surface.

Optical quality of the film is excellent once laminated.

EMI shielding effectiveness is comparable to woven wire mesh such as EmiClare due to the single sheet copper construction.

Termination of the conductive surface is via direct contact to the mesh via a rear stepped edge only:



The manufacturing process is complex and designed for high volume reducing any options or variations in design.

Optical Filters capability in optical lamination process integrates this base film into finish display filters incorporating Anti-Reflective finishes, transparent heaters and touch enabled screens.

