



**CONNETTORI COASSIALI PER CENTRALI TELEFONICHE
COAXIAL CONNECTORS FOR TELEPHONIC STATION**

3/3

- 1.0/2.3 (N3)
- 1.6/5.6 (N2)



CONTENTS/SOMMARIO

1.0/2.3	SECTION/SEZIONE PAG. 1-10
1.6/5.6	SECTION/SEZIONE 2 PAG. 1-47

Belco S.p.A. si riserva il diritto di apportare in qualsiasi momento
delle modifiche ai prodotti del presente catalogo
Figures not binding. Design subject to modifications

◆ GENERAL INFORMATION – COAXIAL CABLE TYPE	Pag. 2
◆ SPECIFICATIONS	Pag. 3
◆ 50 Ω - STRAIGHT & RIGHT ANGLE PLUG AND SOCKET CONNECTORS	Pag. 4
◆ 50 Ω - STRAIGHT & RIGHT ANGLE PCB SOCKET CONNECTORS	Pag. 5
◆ 75 Ω - STRAIGHT & RIGHT ANGLE PLUG CONNECTORS - CRIMP TYPE	Pag. 6 - 7
◆ 75 Ω - STRAIGHT & RIGHT ANGLE SOCKET CONNECTORS - CRIMP TYPE	Pag. 8
◆ 75 Ω - STRAIGHT & RIGHT ANGLE PCB SOCKET CONNECTORS	Pag. 9 - 10
◆	Pag.
◆	Pag.
◆ PART NUMBER REFERENCE CHART	Pag.

1.0/2.3 CONNECTORS

GENERAL INFORMATION COAXIAL CABLE TYPES



GENERAL INFORMATION

Connection possibilities exists for many different cables as for the chart. **Other cables are available on request.**

GROUP	CABLE CODE	OUTER DIA.	IMPED.	GROUP	CABLE CODE	OUTER DIA.	IMPED.
1	RG179 B/U	2,54	75 Ω	4	FLEX 3/75	3,60±0,1	75 Ω
1	RG187 B/U	2,79	75 Ω	4	FLEX 4/75	4,50±0,1	75 Ω
1	RG59 B/U	6,15	75 Ω	4	FLEX 5/75	4,70±0,1	75 Ω
1	RG6 /U	8,43	75 Ω	4	FLEX 6/75	6,00±0,2	75 Ω
2	2YCY 0,4/2,5	3,80	75 Ω	4	FLEX 7/75	7,40±0,4	75 Ω
2	2YCCY 0,4/2,5	4,50	75 Ω	5	1,5C-2V	2,85	75 Ω
2	2YC(mS)CY 0,4/2,5	4,80	75 Ω	5	1,5C-XW	3,30	75 Ω
2	2YCY 0,7/4,4	6,00	75 Ω	5	2,5C-2V	4,00±0,5	75 Ω
2	2YC(mS)CY 0,5/3,0	6,00	75 Ω	5	2,5C-FXW	4,80	75 Ω
2	2YCCY 0,7/4,4	7,40	75 Ω	5	3C-2V	5,80±0,5	75 Ω
2	2YC(mS)C2YCY 0,7/4,4	9,50	75 Ω	5	3C-2W	6,50±0,5	75 Ω
2	2YCCY 1,0/6,5	9,50	75 Ω	6	BT 3002	3,55±0,15	75 Ω
2	2YC(mS)CY 1,0/6,5	9,50	75 Ω	6	BT 2002	5,10±0,1	75 Ω
3	ST 212/1-1/2	3,10±0,1	75 Ω	6	BT 2003	6,70	75 Ω
3	ST 121	4,80 max	75 Ω	7	TZC 75024	3,55±0,15	75 Ω
3	ST 212/3	5,00 max	75 Ω	8	L910/34	3,90	75 Ω
3	ST 214/1-1/2	5,80±0,1	75 Ω	8	L910/39	3,70±0,1	75 Ω
3	ST 120	5,90 max	75 Ω	9	LSOH 0,25/1,15	2,65±0,1	75 Ω
3	ST 271	6,50 max	75 Ω	9	EV1CH 0,315/1,95	3,55±0,15	75 Ω
3	ST 214/3	8,00 max	75 Ω	9	CINA TYPE II	4,40±0,2	75 Ω
4	FLEX 2/75	2,90 max	75 Ω	9	CINA TYPE III	6,70±0,25	75 Ω

Assembling instructions are available on customer request.

1.0/2.3 CONNECTORS

SPECIFICATIONS



MATERIALS

- | | |
|-------------------------|---------------------------------|
| - Bodies, nuts | Brass |
| - Male inner contacts | Brass or beryllium copper |
| - Female inner contacts | Beryllium copper |
| - Female outer contact | Beryllium copper |
| - Ferrules | Copper alloy |
| - Insulators | PTFE (Teflon) or thermoplastics |

FINISH

- | | |
|-----------------------------|----------------------------|
| - Contact surfaces | Gold over Nickel |
| - Bodies and crimp ferrules | Nickel or Gold over Nickel |

MECHANICAL

Withdrawal force:

- | | |
|-----------------------------|------------------------|
| - Inner female contact | 0,2 N (0.04 lbs.) min. |
| - Outer male contact | 0,7 N (0.15 lbs.) min. |
| - Between sockets and plugs | 10 N (2.24 lbs.) max. |
| - Between sockets and plugs | 0,9 N (0.20 lbs.) min. |

ELECTRICAL

- | | | |
|--------------------------------------|-------------------------|------------------|
| - Nominal impedance | 50 Ω | 75 Ω |
| - Frequency range | 0 - 2 GHz | 0 - 2 GHz |
| - Voltage rating | At sea level = 250 Vrms | |
| - Insulation resistance | 1000 MΩ minimum | |
| - Inner contact | 4 mΩ max. | 6mΩ typical max. |
| - Outer contact | 2,5 mΩ max. | |
| - Reflection coefficient (f = 1 GHz) | 0,05 max. | 0,1 max |

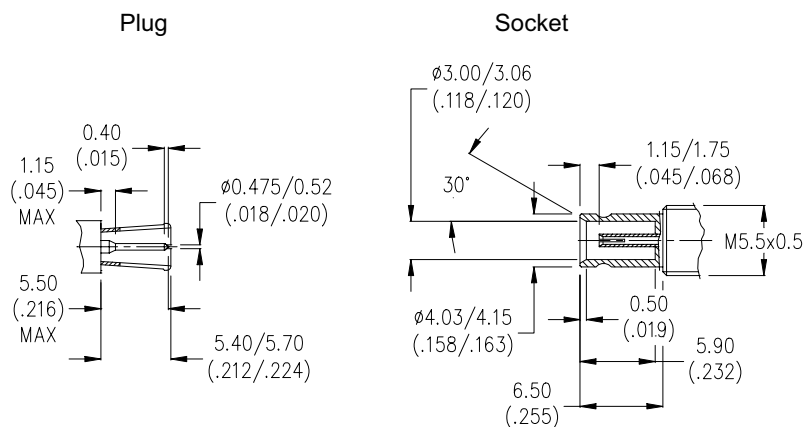
ENVIRONMENTAL

- | | |
|----------------------|---------------|
| - Temperature rating | -40°C to 85°C |
|----------------------|---------------|

GENERAL

- | | |
|------------------------|-----------------------|
| - Connector durability | 500 matings minimum |
| - Standards | CECC 22230, DIN 47297 |

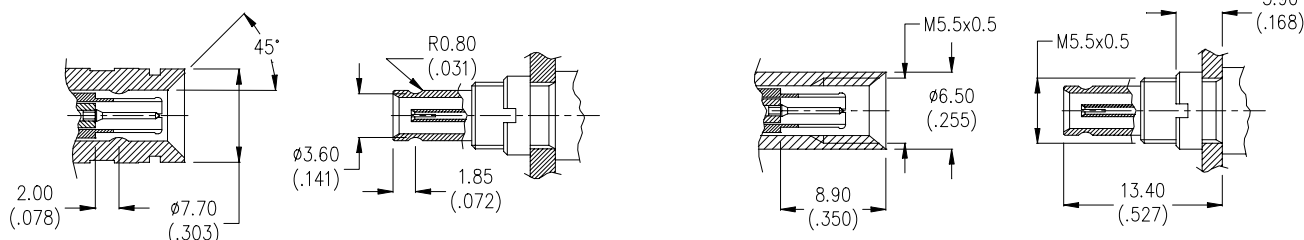
MATING DIMENSIONS



COUPLING TYPES

Standard Push-Pull (other types: screw, snap-on, slide-in available on request)

Screw type

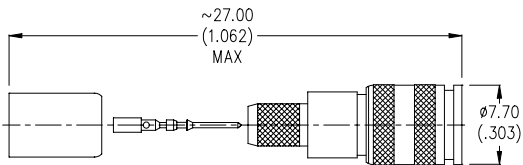


1.0/2.3 CONNECTORS

STRAIGHT PLUGS & SOCKETS 50 Ω

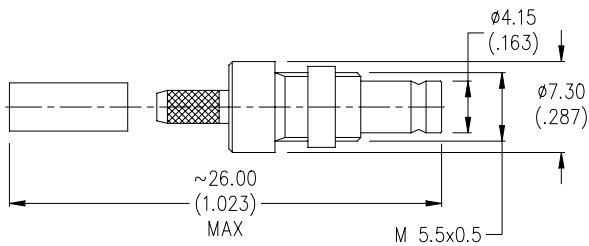


50 Ω STRAIGHT FULL CRIMP PUSH-PULL PLUGS



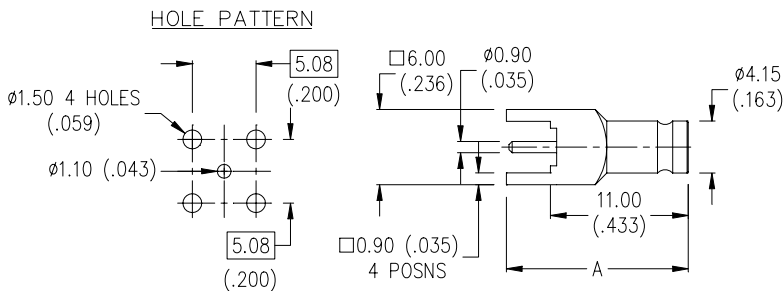
CABLE TYPE	OUTER DIA.	PART NUMBER
RG58/U	4,95	B01.511.211
RG316/U	2,49±0,1	B01.511.212

50 Ω STRAIGHT FULL CRIMP BULKHEAD SOCKETS



CABLE TYPE	OUTER DIA.	PART NUMBER
RG58/U	4,95	B01.711.211
RG316/U	2,49±0,1	B01.711.212

50 Ω STRAIGHT PCB SOCKETS



A DIMENSION	PART NUMBER
14,5 (.570)	B01.831.001
15,5 (.610)	B01.831.003

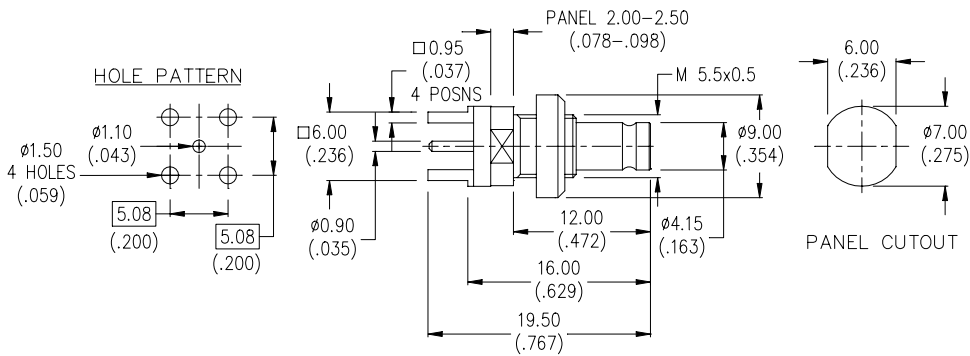
1.0/2.3 CONNECTORS

STRAIGHT & RIGHT ANGLE PCB SOCKETS 50 Ω



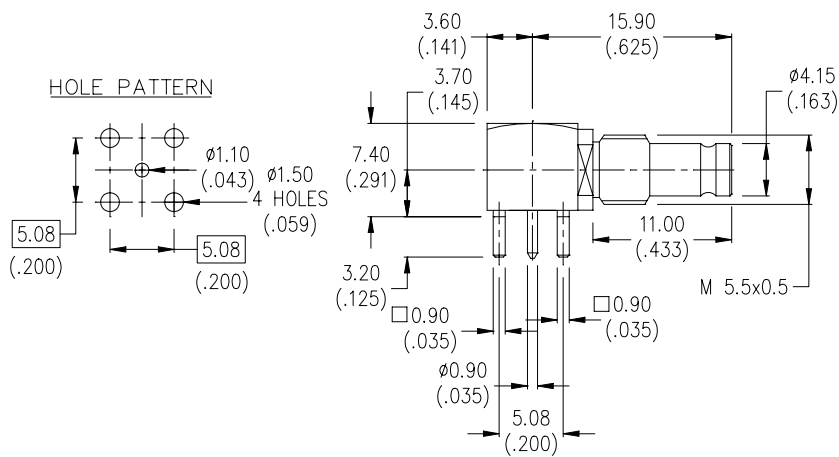
50 Ω STRAIGHT PCB SOCKETS

PART NUMBER



B01.731.021

50 Ω RIGHT ANGLE PCB SOCKETS



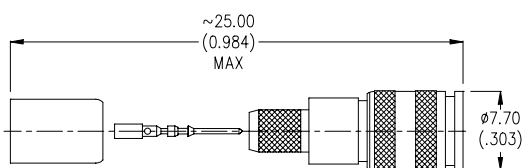
B01.732.021

1.0/2.3 CONNECTORS

STRAIGHT & RIGHT ANGLE CRIMP PLUGS 75 Ω

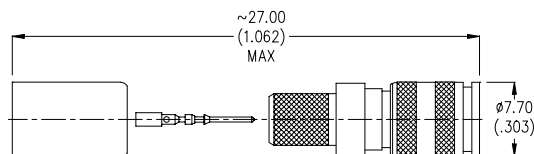


75 Ω STRAIGHT FULL CRIMP PLUGS



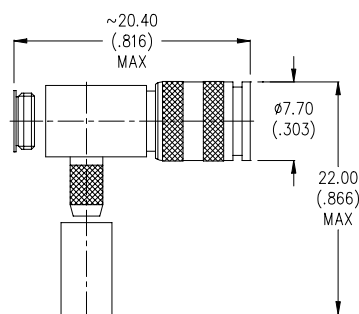
CABLE TYPE	OUTER DIA.	PART NUMBER INDENT CRIMP	PART NUMBER 1.2 SQUARE CRIMP
ST212	3,10±0,1	B01.511.251	B01.511.232
BT3002 – TZC75024	3,55±0,15	B01.511.253	B01.511.236
RA7000	4,40±0,1	B01.511.254	B01.511.241
B 0,25/1,45	2,60	B01.511.255	
HFE2290	3,40±0,2	B01.511.256	
RG179 B/U – RA8000	2,54±0,127	B01.511.257	B01.511.231
FLEX 2	2,90 max	B01.511.258	B01.511.237
FLEX 3	3,60±0,1	B01.511.259	B01.511.238
2YCY 0,4/2,5	3,80±0,3	B01.511.260	B01.511.245
2,5C-2V	4,00±0,5	B01.511.261	B01.511.244
LA910/34	3,90	B01.511.262	
2YCCY 0,4/2,5	4,50		B01.511.243

75 Ω STRAIGHT FULL CRIMP PLUGS



CABLE TYPE	OUTER DIA.	PART NUMBER INDENT CRIMP	PART NUMBER 1.2 SQUARE CRIMP
ST214	5,90 max	B01.511.263	B01.511.233
BT2003	6,70	B01.511.264	
BT5000	5,65±0,1	B01.511.265	
TZC75005	5,60±0,2	B01.511.266	
A 0,4/2,4	4,07	B01.511.267	
FLEX 5	4,70±0,1	B01.511.268	B01.511.239
FLEX 7	7,40±0,6	B01.511.269	
3C-2V	5,80±0,5	B01.511.270	B01.511.235

75 Ω RIGHT ANGLE SOLDER CRIMP PLUGS



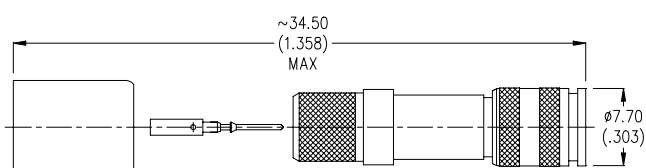
CABLE TYPE	OUTER DIA.	PART NUMBER
ST212	3,10±0,1	B01.512.101
ST214	5,80±0,1	B01.512.103
BT2003	6,70	B01.512.109
BT3002 – TZC75024	3,55±0,15	B01.512.110
BT5000	5,65±0,1	B01.512.115
RA7000	4,40±0,1	B01.512.104
RG179	2,54	B01.512.100

1.0/2.3 CONNECTORS

STRAIGHT & RIGHT ANGLE TYPE 54 CRIMP PLUGS 75 Ω

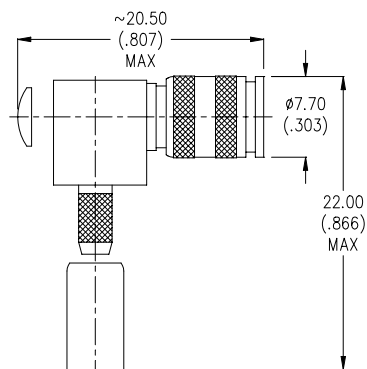


75 Ω STRAIGHT FULL CRIMP PLUGS



CABLE TYPE	OUTER DIA.	PART NUMBER
BT2003	6,70	B01.511.291
BT3002	3,55±0,15	B01.511.292
BT5000	5,65±0,1	B01.511.293
RA7000	4,40±0,1	B01.511.294
RA8000 – RG179 B/U	2,75	B01.511.295

75 Ω RIGHT ANGLE SOLDER CRIMP PLUGS

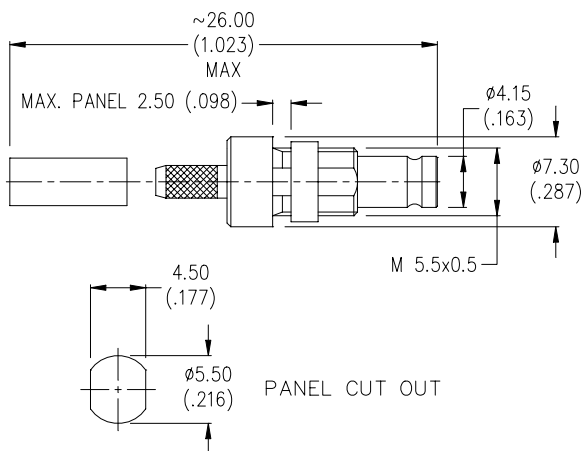


CABLE TYPE	OUTER DIA.	PART NUMBER
BT2003	6,70	B01.511.131
BT3002	3,55±0,15	B01.511.132
BT5000	5,65±0,1	B01.511.133
RA7000	4,40±0,1	B01.511.134
RA8000 – RG179 B/U	2,75	B01.511.135

1.0/2.3 CONNECTORS

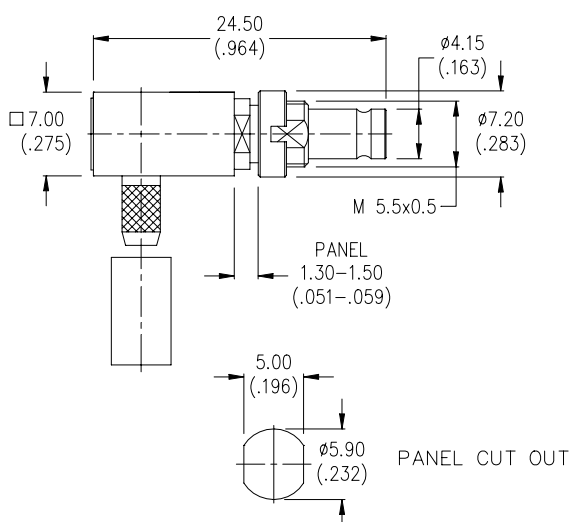
STRAIGHT & RIGHT ANGLE SOCKETS 75 Ω

75 Ω STRAIGHT BULKHEAD FULL CRIMP SOCKETS



CABLE TYPE	OUTER DIA.	PART NUMBER
ST212	3,10±0,1	B01.711.252
ST214	5,80±0,1	B01.711.253
BT2003	6,70	B01.711.254
BT3002	3,55±0,15	B01.711.255
BT5000	5,65±0,1	B01.711.256
RA7000	4,40±0,1	B01.711.257
TZC75005	5,60±0,2	B01.711.258
A 0,4/2,4	4,07	B01.711.255
B 0,25/1,45	2,60	B01.711.260
HFE2290	3,40±0,2	B01.711.261
RG179 B/U – RA8000	2,54	B01.711.262
FLEX 2	2,90 max	B01.711.263
FLEX 3	3,60±0,1	B01.711.264
FLEX 5	4,70±0,1	B01.711.265
FLEX 7	7,40±0,4	B01.711.266
LA 910/34	3,9	B01.711.267
2,5C-2V	4,00±0,5	B01.711.268
3C-2V	5,80±0,5	B01.711.269
3C-2W	6,50±0,5	B01.711.270

75 Ω RIGHT ANGLE BULKHEAD SOLDER CRIMP SOCKETS



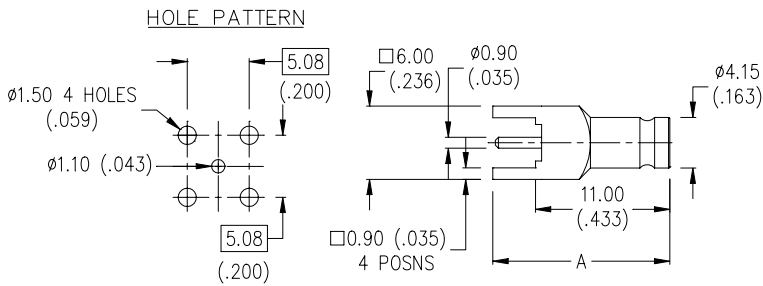
CABLE TYPE	OUTER DIA.	PART NUMBER
BT3002	3,55±0,15	B01.712.110
ST212	3,10±0,1	B01.712.101
ST214	5,80±0,1	B01.712.103
RG179 B/U – RA8000	2,54	B01.712.100
RG59	6,10	B01.712.115
FLEX 2	2,90 max	B01.712.105
FLEX 3	3,60±0,1	B01.712.106

1.0/2.3 CONNECTORS

STRAIGHT & RIGHT ANGLE PCB SOCKETS 75 Ω



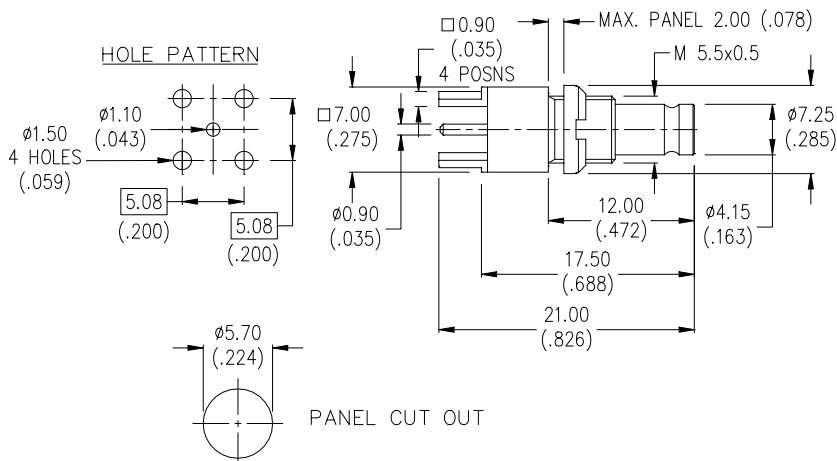
75 Ω STRAIGHT PCB SOCKETS



A DIMENSION	PART NUMBER
14,5 (.571)	B01.831.011
15,5 (.610)	B01.831.013

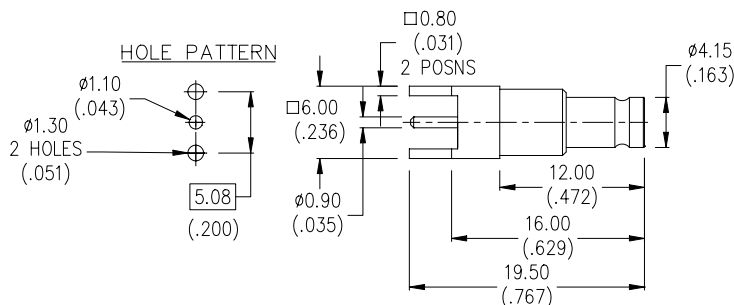
75 Ω STRAIGHT PCB BULKHEAD SOCKETS

B01.731.011



75 Ω STRAIGHT PCB SOCKETS

B01.831.021



1.0/2.3 CONNECTORS

PART NUMBER - PAGE REFERENCE CHART



PART NUMBER	PAGE	PART NUMBER	PAGE	PART NUMBER	PAGE	PART NUMBER	PAGE
B01.511.131	7	B01.711.266	8				
B01.511.132	7	B01.711.267	8				
B01.511.133	7	B01.711.268	8				
B01.511.134	7	B01.711.269	8				
B01.511.135	7	B01.711.270	8				
B01.511.211	4	B01.712.100	8				
B01.511.212	4	B01.712.101	8				
B01.511.251	6	B01.712.103	8				
B01.511.253	6	B01.712.105	8				
B01.511.254	6	B01.712.106	8				
B01.511.255	6	B01.712.110	8				
B01.511.256	6	B01.712.115	8				
B01.511.257	6	B01.731.011	9				
B01.511.258	6	B01.731.021	5				
B01.511.259	6	B01.732.021	5				
B01.511.260	6	B01.732.031	10				
B01.511.261	6	B01.831.001	4				
B01.511.262	6	B01.831.003	4				
B01.511.263	6	B01.831.011	9				
B01.511.264	6	B01.831.013	9				
B01.511.265	6	B01.831.021	9				
B01.511.266	6						
B01.511.267	6						
B01.511.268	6						
B01.511.269	6						
B01.511.270	6						
B01.511.271	6						
B01.511.291	7						
B01.511.292	7						
B01.511.293	7						
B01.511.294	7						
B01.511.295	7						
B01.512.100	6						
B01.512.101	6						
B01.512.103	6						
B01.512.104	6						
B01.512.109	6						
B01.512.110	6						
B01.512.115	6						
B01.711.211	4						
B01.711.212	4						
B01.711.252	8						
B01.711.253	8						
B01.711.254	8						
B01.711.255	8						
B01.711.255	8						
B01.711.256	8						
B01.711.257	8						
B01.711.258	8						
B01.711.260	8						
B01.711.261	8						
B01.711.262	8						
B01.711.263	8						
B01.711.264	8						
B01.711.265	8						

◆ GENERAL INFORMATION – COAXIAL CABLE TYPE		Pag. 2
◆ SPECIFICATIONS		Pag. 3
◆ COUPLING TYPES		Pag. 4
◆ STRAIGHT PLUG CONNECTORS	- CLAMP TYPE	Pag. 5 – 8
	- CRIMP TYPE	Pag. 9
	- BULKHEAD	Pag. 10
◆ RIGHT ANGLE PLUG CONNECTORS	- CLAMP TYPE	Pag. 11 – 13
	- CRIMP TYPE	Pag. 14
◆ STRAIGHT SOCKET CONNECTORS	- CLAMP TYPE	Pag. 15 – 16
	- INSULATED CRIMP TYPE	Pag. 17
	- CRIMP TYPE	Pag. 18
	- BULKHEAD	Pag. 19
◆ RIGHT ANGLE SOCKET CONNECTORS	- CLAMP TYPE	Pag. 20 – 21
	- CRIMP TYPE	Pag. 22
◆ STRAIGHT PCB SOCKET CONNECTORS		Pag. 23 – 24
◆ RIGHT ANGLE PCB SOCKET CONNECTORS		Pag. 25
◆ U-LINK PLUGS		Pag. 26
◆ MONITOR POINTS	- Y TYPE	Pag. 27
	- T TYPE	Pag. 28 – 29
	- T TYPE CABLE	Pag. 30
◆ DECOUPLED MONITOR POINTS	- Y TYPE	Pag. 31 – 33
	- T TYPE	Pag. 34 – 35
◆ TERMINATIONS		Pag. 36
◆ ATTENUATORS		Pag. 37
◆ ADAPTERS	- 1.6/5.6 – 1.6/5.6	Pag. 38 – 39
	- 1.6/5.6 – 1.0/2.3	Pag. 40
	- 1.6/5.6 – BNC	Pag. 41 – 42
	- 1.6/5.6 – TNC	Pag.
	- 1.6/5.6 – N	Pag. 43
◆ ACCESSORIES	- INSULATORS CAPS	Pag. 44
	- TOOLS	Pag. 45
	- TERMINATION STRIPS	Pag. 46
◆ PART NUMBER REFERENCE CHART		Pag. 47 - 48

1.6/5.6 CONNECTORS

GENERAL INFORMATION COAXIAL CABLE TYPES



GENERAL INFORMATION

BELCO is a Company specialised in design, development, production and sales of Radiofrequency Coaxial Connectors. The production includes the whole range of coaxial connectors, from micro series to macro series, the EIA 7/8", with the possibility of assembling to cables and every kind of coaxial components on customer design.

BELCO's distinctive skill is the flexibility allowing to satisfy every kind of Customer request quickly.

The coaxial connectors of the series 1.6/5.6 - having an outer conductor diameter of 5.6 mm. - are largely used in modern telecommunication equipment with good electrical and mechanical performances.

The characteristic impedance is 75 ohm and the maximum operating frequency can go up to 1 GHz.

The connectors are manufactured according to CEI CECC EN 122 240, DIN 47295 and IEC 169-13 specifications.

According to applications, different socket-plug coupling mechanism are available:

- Type A: push - screw coupling
- Type B: push - lock (snap-on) coupling
- Type C: slide-in coupling
- Type D: bulkhead coupling (suitable for connections to equipment units or subassemblies)
- Type E: push-pull locked coupling

Connection possibilities exists for many different cables.

GROUP	CABLE CODE	OUTER DIA.	IMPED.	GROUP	CABLE CODE	OUTER DIA.	IMPED.
1	RG179 B/U	2,54	75 Ω	4	FLEX 3/75	3,60±0,1	75 Ω
1	RG187 B/U	2,79	75 Ω	4	FLEX 4/75	4,50±0,1	75 Ω
1	RG59 B/U	6,15	75 Ω	4	FLEX 5/75	4,70±0,1	75 Ω
1	RG6 /U	8,43	75 Ω	4	FLEX 6/75	6,00±0,2	75 Ω
2	2YCY 0,4/2,5	3,80	75 Ω	4	FLEX 7/75	7,40±0,4	75 Ω
2	2YCCY 0,4/2,5	4,50	75 Ω	5	1,5C-2V	2,85	75 Ω
2	2YC(mS)CY 0,4/2,5	4,80	75 Ω	5	1,5C-XW	3,30	75 Ω
2	2YCY 0,7/4,4	6,00	75 Ω	5	2,5C-2V	4,00±0,5	75 Ω
2	2YC(mS)CY 0,5/3,0	6,00	75 Ω	5	2,5C-FXW	4,80	75 Ω
2	2YCCY 0,7/4,4	7,40	75 Ω	5	3C-2V	5,80±0,5	75 Ω
2	2YC(mS)C2YCY 0,7/4,4	9,50	75 Ω	5	3C-2W	6,50±0,5	75 Ω
2	2YCCY 1,0/6,5	9,50	75 Ω	6	BT 3002	3,55±0,15	75 Ω
2	2YC(mS)CY 1,0/6,5	9,50	75 Ω	6	BT 2002	5,10±0,1	75 Ω
3	ST 212/1-/2	3,10±0,1	75 Ω	6	BT 2003	6,70	75 Ω
3	ST 121	4,80 max	75 Ω	7	TZC 75024	3,55±0,15	75 Ω
3	ST 212/3	5,00 max	75 Ω	8	L910/34	3,90	75 Ω
3	ST 214/1-/2	5,80±0,1	75 Ω	8	L910/39	3,70±0,1	75 Ω
3	ST 120	5,90 max	75 Ω	9	LSOH 0,25/1,15	2,65±0,1	75 Ω
3	ST 271	6,50 max	75 Ω	9	EV1CH 0,315/1,95	3,55±0,15	75 Ω
3	ST 214/3	8,00 max	75 Ω	9	CINA TYPE II	4,40±0,2	75 Ω
4	FLEX 2/75	2,90 max	75 Ω	9	CINA TYPE III	6,70±0,25	75 Ω

Assembling instructions are available on customer request.

1.6/5.6 CONNECTORS

SPECIFICATIONS



MATERIALS

- Bodies, nuts, sleeves	CW 614N as per UNI EN 12164
- Male inner contacts	CW 614N as per UNI EN 12164
- Female inner contacts	Beryllium copper
- Resilient outer plug contacts	Beryllium copper
- Insulators	PTFE (Teflon)

FINISH

- Inner contacts and outer plug contacts	3μ Ni + 1μ Au min
- Contact surfaces of socket bodies	3μ Ni + 1μ Au min
- Other parts of socket bodies	3μ Ni + 0,3μ Au min
- Plug bodies	3 ÷ 5μ Ni
- Other metal parts	5μ Ag min. or Nickel plated or Optalloy *

* Optalloy is equivalent to "Sucoplate"

MECHANICAL

- Mating and dimensions	as per CEI CECC EN 122 240
- Contacts captivation (axial force)	30 n
- Engagement & Separation	2,2 ÷ 12 N (Type A, C, D); 18 ÷ 50 N (Type B); 4 ÷ 20 N (Type E)
- Effectiveness of cable clamping device:	
- cable pulling	200 N min (semi rigid cable) 100 N (double braided cable) 50 N (single braided cable)
- cable torsion	0,05 Nm min
- Tensile strength of coupling mechanism	300 N (Type A, E)
- Bending moment	1 Nm (Type A)

ELECTRICAL

- Nominal impedance	75 ohm
- Frequency range	up to 4 Ghz
- Reflection factor:	<0,02 up to 0,1 Ghz <0,04 up to 0,5 Ghz <0,1 up to 1 Ghz
- Centre contact resistance	initial <4 mOhm after conditioning <(initial + 4 mOhm)
- Outer conductor continuity	<2 mOhm <(initial + 2 mOhm)
- Insulation resistance	>10 GOhm >1 GOhm
- Working voltage	at sea level 330 V at 20 Km altitude 125 V
- Voltage Proof	1000 V 300 V

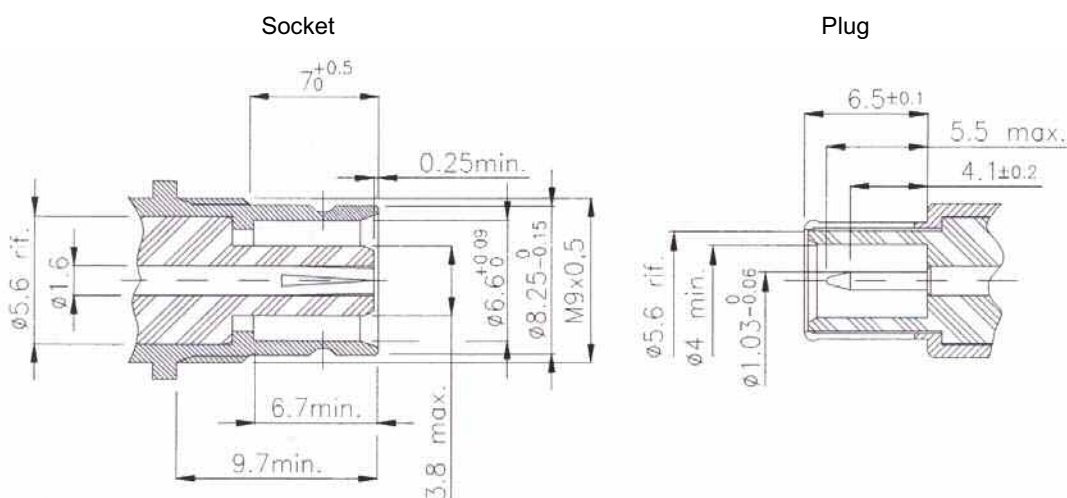
ENVIRONMENTAL

- Operating temperature range	-40°C to +85°C
- Climatic category	40/85/21
- Corrosion	Salt Mist Test as per IEC 68-2-11 Test ka

ENDURANCE

- Mechanical	500 operations min.
- High temperature	85°C for 1000 h

MATING DIMENSIONS

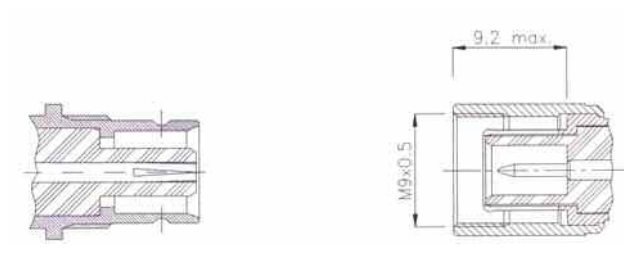


1.6/5.6 CONNECTORS

COUPLING TYPES

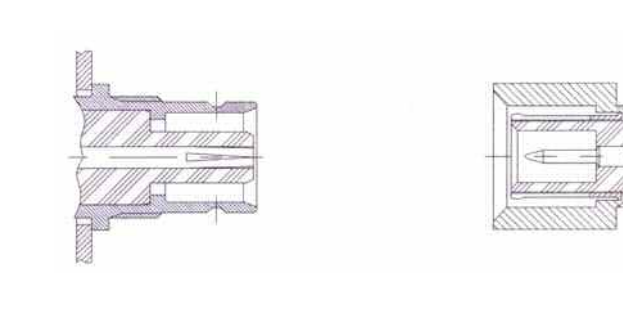
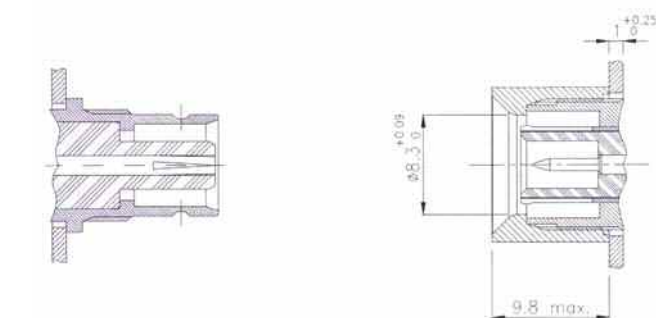
Coupling types A (thread)

Coupling types B (snape-on)



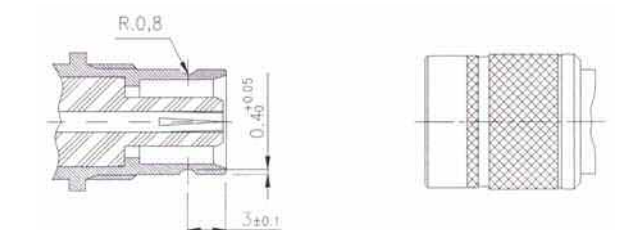
Coupling types C (slide-in)

Coupling types D (plug-in)



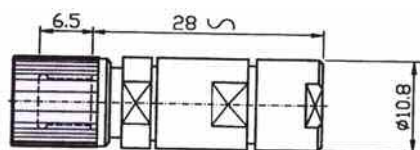
Coupling types E (push-pull locked)

Graphic symbols

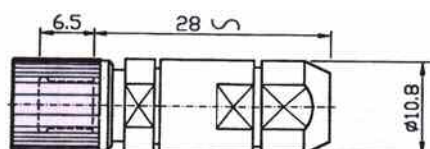


1.6/5.6 CONNECTORS

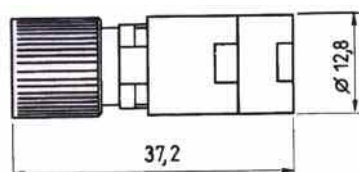
STRAIGHT CLAMP PLUGS Coupling type A (screw)



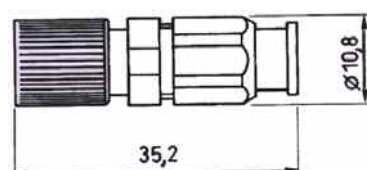
CABLE TYPE	OUTER DIA.	PART NUMBER
2YCCY 0,4/2,5	4,50	B02.111.306
FLEX 4/75	4,50±0,1	B02.111.306
FLEX 5/75	4,70±0,1	B02.111.306
2YC(mS)CY 0,4/2,5	4,80	B02.111.306
2,5C-FXW	4,80	B02.111.306
ST 121	4,80max	B02.111.306
ST 214/1-2	5,80±0,1	B02.111.310
3C-2V	5,80±0,5	B02.111.312
ST 120	5,90max	B02.111.310
2YCY 0,7/4,4	6,00	B02.111.307
2YC (mS)CY 0,5/3,0	6,00	B02.111.307
FLEX 6/75	6,00±0,2	B02.111.307
RG59 B/U	6,15	B02.111.310
ST 271	6,50 max	B02.111.310
3C-2W	6,50±0,5	B02.111.313
BT 2003	6,70	B02.111.313
CINA TYPE III	6,70±0,25	B02.111.315
2YCCY 0,7/4,4	7,40	B02.111.305
FLEX 7/75	7,40±0,4	B02.111.305



CABLE TYPE	OUTER DIA.	PART NUMBER
TZC 75024	3,55±0,15	B02.111.308
EV1CH 0,315/1,95	3,55±0,15	B02.111.308
BT 3002	3,55±0,15	B02.111.308
FLEX 3/75	3,60±0,1	B02.111.309
L910/39	3,70±0,1	B02.111.308
2YCY 0,4/2,5	3,80	B02.111.308
L910/34	3,90	B02.111.308
2,5C-2V	4,00±0,5	B02.111.311
CINA TYPE II	4,40±0,2	B02.111.314



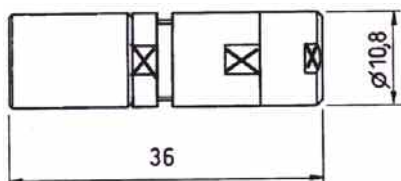
CABLE TYPE	OUTER DIA.	PART NUMBER
2YC(mS)C2YCY 0,7/4,4	9,50	B02.111.316
2YCCY 1,0/6,5	9,50	B02.111.317
2YC(mS)CY 1,0/6,5	9,50	B02.111.317



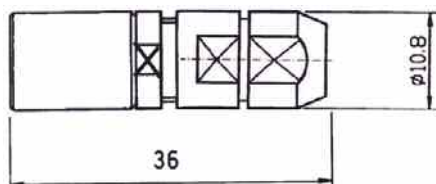
CABLE TYPE	OUTER DIA.	PART NUMBER
RG179 B/U	2,54	B02.111.304
RG187 B/U	2,79	B02.111.304
1,5C-2V	2,85	B02.111.301
FLEX 2/75	2,90max	B02.111.301
ST 212/1-2	3,10±0,1	B02.111.302

1.6/5.6 CONNECTORS

STRAIGHT CLAMP PLUGS Coupling type B (snap-on)



CABLE TYPE	OUTER DIA.	PART NUMBER
2YCCY 0,4/2,5	4,50	B02.211.306
FLEX 4/75	4,50±0,1	B02.211.306
FLEX 5/75	4,70±0,1	B02.211.306
2YC(mS)CY 0,4/2,5	4,80	B02.211.306
2,5C-FXW	4,80	B02.211.306
ST 121	4,80 max	B02.211.306
3C-2V	5,80±0,5	B02.211.312
ST214/1-1/2	5,80±0,1	B02.211.310
ST 120	5,90 max	B02.211.310
2YCY 0,7/4,4	6,00	B02.211.307
2YC(mS)CY 0,5/3,0	6,00	B02.211.307
FLEX 6/75	6,00±0,2	B02.211.307
RG59 B/U	6,15	B02.211.310
ST271	6,50 max	B02.211.310
3C-2W	6,50±0,5	B02.211.313
BT 2003	6,70	B02.211.313
2YCCY 0,7/4,4	7,40	B02.211.305
FLEX 7/75	7,40±0,40	B02.211.305

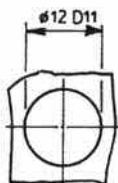
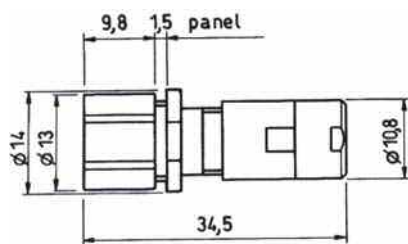


CABLE TYPE	OUTER DIA.	PART NUMBER
TZC 75024	3,55±0,15	B02.211.308
EV1CH 0,315/1,95	3,55±0,15	B02.211.308
BT 3002	3,55±0,15	B02.211.308
FLEX 3/75	3,60±0,1	B02.211.309
L910/39	3,70±0,1	B02.211.308
2YCY 0,4/2,5	3,80	B02.211.308
L910/34	3,90	B02.211.308

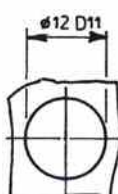
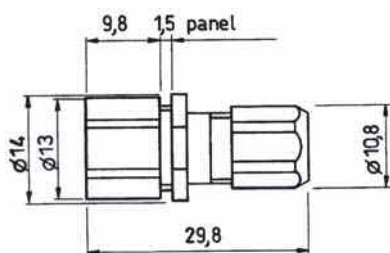
1.6/5.6 CONNECTORS

STRAIGHT CLAMP PLUGS

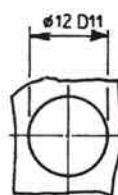
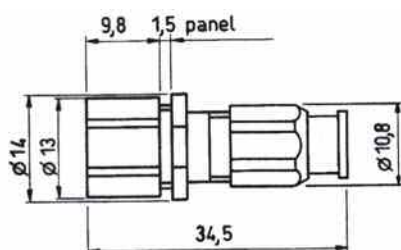
Coupling type C (slide in)



CABLE TYPE	OUTER DIA.	PART NUMBER
BT 3002	3,55±0,15	B02.321.308
TZC 75024	3,55±0,15	B02.321.308
EV1CH 0,315/1,95	3,55±0,15	B02.321.308
L910/39	3,70±0,1	B02.321.308
2YCY 0,4/2,5	3,80	B02.321.308
L910/34	3,90	B02.321.308
2YCCY 0,4/2,5	4,50	B02.321.306
FLEX 4/75	4,50±0,1	B02.321.306
FLEX 5/75	4,70±0,1	B02.321.306
2YC(mS)CY 0,4/2,5	4,80	B02.321.306
2,5C-FXW	4,80	B02.321.306
ST 121	4,80 max	B02.321.306
ST 214/1-/2	5,80±0,1	B02.321.310
3C-2V	5,80±0,5	B02.321.312
ST 120	5,90 max	B02.321.310
2YCY 0,7/4,4	6,00	B02.321.307
2YC(mS)CY 0,5/3,0	6,00	B02.321.307
FLEX 6/75	6,00±0,2	B02.321.307
RG59 B/U	6,15	B02.321.310
ST 271	6,50 max	B02.321.310
3C-2W	6,50±0,5	B02.321.313
BT 2003	6,70	B02.321.313
2YCCY 0,7/4,4	7,40	B02.321.305
FLEX 7/75	7,40±0,4	B02.321.305



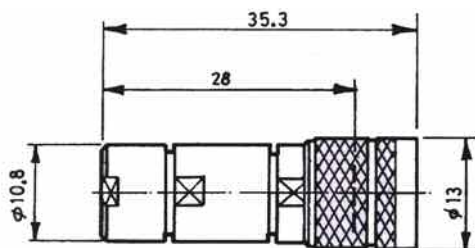
CABLE TYPE	OUTER DIA.	PART NUMBER
TZC 75024	3,55±0,15	B02.321.301
BT 3002	3,55±0,15	B02.321.301
EV1CH 0,315/1,95	3,55±0,15	B02.321.301
L910/39	3,70±0,1	B02.321.301
2YCY 0,4/2,5	3,80	B02.321.301
L910/34	3,90	B02.321.301
2YCCY 0,4/2,5	4,50	B02.321.303
FLEX 4/75	4,50±0,1	B02.321.303
FLEX 5/75	4,70±0,1	B02.321.303
2YC(mS)CY 0,4/2,5	4,80	B02.321.303
2,5C-FXW	4,80	B02.321.303
ST 121	4,80 max	B02.321.303



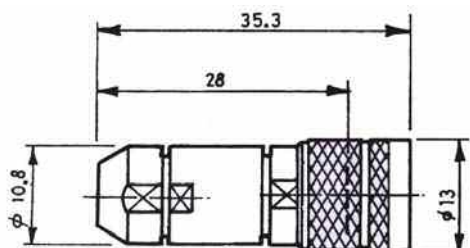
CABLE TYPE	OUTER DIA.	PART NUMBER
RG179 B/U	2,54	B02.321.304
RG187 B/U	2,79	B02.321.304
ST 212/1-/2	3,10±0,1	B02.321.302
FLEX 3/75	3,60±0,1	B02.321.309

1.6/5.6 CONNECTORS

STRAIGHT CLAMP PLUGS Coupling type E (push-pull)



CABLE TYPE	OUTER DIA.	PART NUMBER
2YCCY 0,4/2,5	4,50	B02.511.306
FLEX 4/75	4,50±0,1	B02.511.306
FLEX 5/75	4,70±0,1	B02.511.306
2YC(mS)CY 0,4/2,5	4,80	B02.511.306
2,5C-FXW	4,80	B02.511.306
ST 121	4,80 max	B02.511.306
ST 214/1-/2	5,80±0,1	B02.511.310
3C-2V	5,80±0,5	B02.511.312
ST 120	5,90 max	B02.511.310
2YCY 0,7/4,4	6,00	B02.511.307
2YC(mS)CY 0,5/3,0	6,00	B02.511.307
FLEX 6/75	6,00±0,2	B02.511.307
RG59 B/U	6,15	B02.511.310
ST 271	6,50 max	B02.511.310
3C-2W	6,50±0,5	B02.511.313
BT 2003	6,70	B02.511.313
2YCCY 0,7/4,4	7,40	B02.511.305
FLEX 7/75	7,40±0,4	B02.511.305

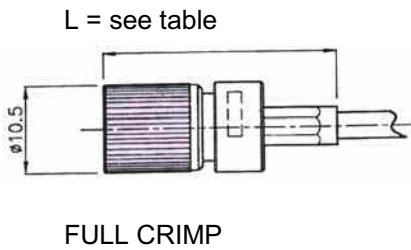


CABLE TYPE	OUTER DIA.	PART NUMBER
TZC 75024	3,55±0,15	B02.511.308
EV1CH 0,315/1,95	3,55±0,15	B02.511.308
BT 3002	3,55±0,15	B02.511.308
FLEX 3/75	3,60±0,1	B02.511.309
L910/39	3,70±0,1	B02.511.308
2YCY 0,4/2,5	3,80	B02.511.308
L910/34	3,90	B02.511.308

1.6/5.6 CONNECTORS

STRAIGHT CRIMP PLUGS

Coupling type A (screw)



L	CABLE TYPE	OUTER DIA.	PART NUMBER
28,7	FLEX 2/75	2,90 max	B02.111.201
28,7	ST 212/1-1/2	3,10±0,1	B02.111.202
28,7	BT 3002	3,55±0,15	B02.111.203
28,7	FLEX 3/75	3,60±0,1	B02.111.204
28,7	FLEX 5/75	4,70±0,1	B02.111.205
31,7	BT 2002	5,10±0,1	B02.111.206
31,7	ST 214/1-1/2	5,80±0,1	B02.111.207
31,7	FLEX 6/75	6,00±0,2	B02.111.208
31,7	2YCCY 0,4/2,5	4,50	B02.111.209
29,7	TR-SP.127- L910-39	3,70±0,1	B02.111.210
31,7	BT2003	6,70	B02.111.211

1.6/5.6 CONNECTORS

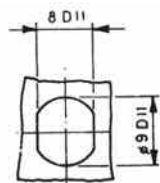
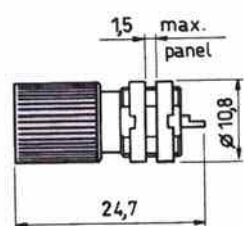
BULKHEAD PLUGS Coupling type A (screw)&D (plug in)



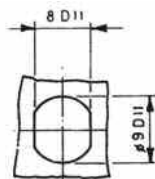
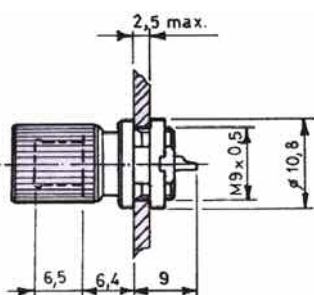
Coupling Type A (screw)

Panel cut out

PART NUMBER



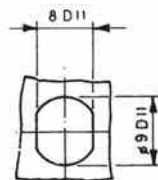
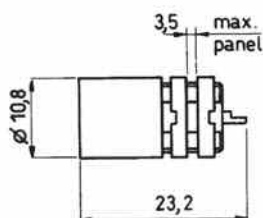
B02.141.001



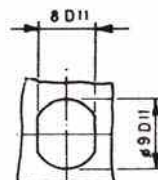
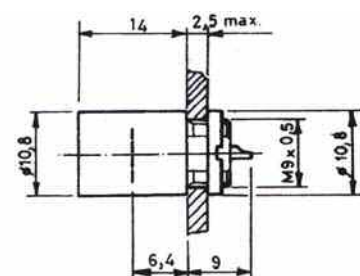
B02.141.002

Coupling Type D (plug in)

Panel cut out



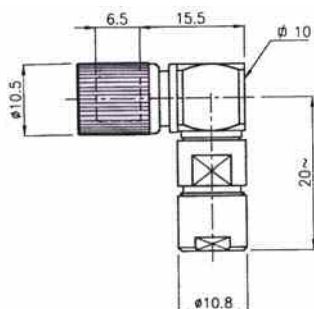
B02.441.001



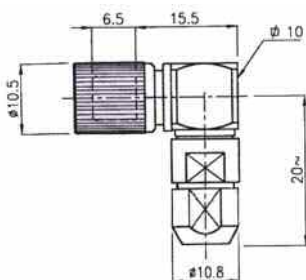
B02.441.002

1.6/5.6 CONNECTORS

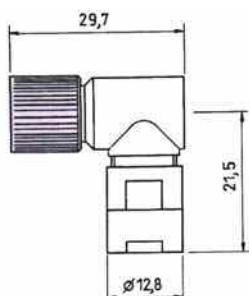
RIGHT ANGLE CLAMP PLUGS Coupling type A (screw)



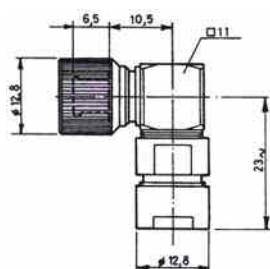
CABLE TYPE	OUTER DIA.	PART NUMBER
2YCCY 0,4/2,5	4,50	B02.112.308
FLEX 4/75	4,50±0,1	B02.112.308
FLEX 5/75	4,70±0,1	B02.112.308
2YC(mS)CY 0,4/2,5	4,80	B02.112.308
2,5C-FXW	4,80	B02.112.308
ST 121	4,80 max	B02.112.308
ST 214/1-/2	5,80±0,1	B02.112.309
3C-2V	5,80±0,5	B02.112.305
ST 120	5,90 max	B02.112.309
2YCY 0,7/4,4	6,00	B02.112.317
2YC(mS)CY 0,5/3,0	6,00	B02.112.317
FLEX 6/75	6,00±0,2	B02.112.317
RG59 B/U	6,15	B02.112.309
ST 271	6,50 max	B02.112.309
3C-2W	6,50±0,5	B02.112.306
BT 2003	6,70	B02.112.306
2YCCY 0,7/4,4	7,40	B02.112.301
FLEX 7/75	7,40±0,4	B02.112.301



CABLE TYPE	OUTER DIA.	PART NUMBER
TZC 75024	3,55±0,15	B02.112.302
BT 3002	3,55±0,15	B02.112.302
EV1CH 0,315/1,95	3,55±0,15	B02.112.302
FLEX 3/75	3,60±0,1	B02.112.304
L910/39	3,70±0,1	B02.112.318
2YCY 0,4/2,5	3,80	B02.112.318
L910/34	3,90	B02.112.318
2,5C-2V	4,00±0,5	B02.112.307



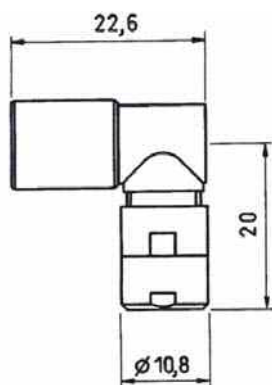
CABLE TYPE	OUTER DIA.	PART NUMBER
RG179 B/U	2,54	B02.112.300
RG187 B/U	2,79	B02.112.300
1,5C-2V	2,85	B02.112.316
FLEX 2/75	2,90 max	B02.112.316
ST 212/1-/2	3,10±0,1	B02.112.311



CABLE TYPE	OUTER DIA.	PART NUMBER
ST 214/3	8,00 max	B02.112.319
2YC(mS)C2YCY 0,7/4,4	9,50	B02.112.320
2YCCY 1,0/6,5	9,50	B02.112.321
2YC(mS)CY 1,0/6,5	9,50	B02.112.321

1.6/5.6 CONNECTORS

RIGHT ANGLE CLAMP PLUGS Coupling type B (snap-on)

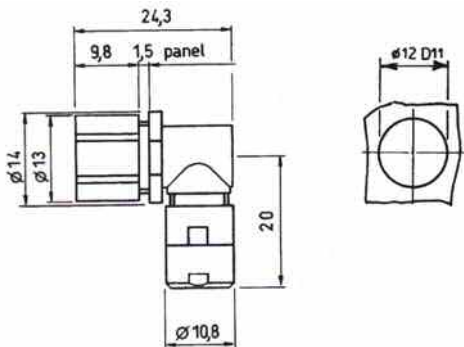


CABLE TYPE	OUTER DIA.	PART NUMBER
2YCCY 0,4/2,5	4,50	B02.212.308
TZC 75024	3,55±0,15	B02.212.302
BT 3002	3,55±0,15	B02.212.302
EV1CH 0,315/1,95	3,55±0,15	B02.212.302
FLEX 3/75	3,60±0,1	B02.212.304
L910/39	3,70±0,1	B02.212.318
2YCY 0,4/2,5	3,80	B02.212.318
L910/34	3,90	B02.212.318
2,5C-2V	4,00±0,5	B02.212.307
FLEX 4/75	4,50±0,1	B02.212.308
FLEX 5/75	4,70±0,1	B02.212.308
2YC(mS)CY 0,4/2,5	4,80	B02.212.308
2,5C-FXW	4,80	B02.212.308
ST 121	4,80 max	B02.212.308
ST 214/1-/2	5,80±0,1	B02.212.309
3C-2V	5,80±0,5	B02.212.305
ST 120	5,90 max	B02.212.309
2YCY 0,7/4,4	6,00	B02.212.317
2YC(mS)CY 0,5/3,0	6,00	B02.212.317
FLEX 6/75	6,00±0,2	B02.212.317
RG59 B/U	6,15	B02.212.309
ST 271	6,50 max	B02.212.309
3C-2W	6,50±0,5	B02.212.306
BT 2003	6,70	B02.212.306
2YCCY 0,7/4,4	7,40	B02.212.301
FLEX 7/75	7,40±0,4	B02.212.301

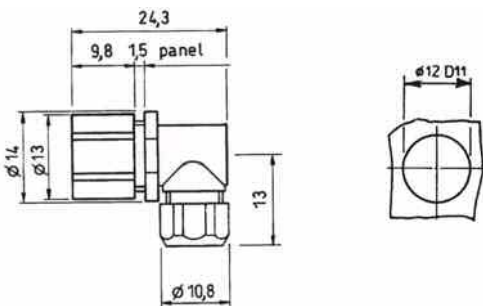
1.6/5.6 CONNECTORS

RIGHT ANGLE CLAMP PLUGS

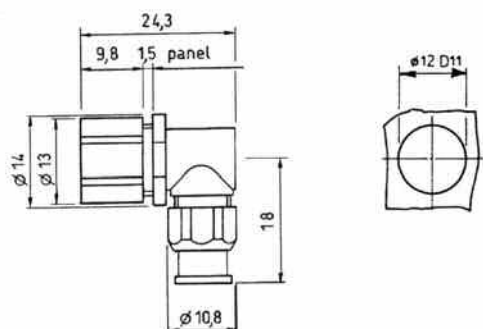
Coupling type C (slide in)



CABLE TYPE	OUTER DIA.	PART NUMBER
2YCCY 0,4/2,5	4,50	B02.312.308
TZC 75024	3,55±0,15	B02.312.302
BT 3002	3,55±0,15	B02.312.302
EV1CH 0,315/1,95	3,55±0,15	B02.312.302
FLEX 3/75	3,60±0,1	B02.312.304
L910/39	3,70±0,1	B02.312.318
2YCY 0,4/2,5	3,80	B02.312.318
L910/34	3,90	B02.312.318
2,5C-2V	4,00±0,5	B02.312.307
FLEX 4/75	4,50±0,1	B02.312.308
FLEX 5/75	4,70±0,1	B02.312.308
2YC(mS)CY 0,4/2,5	4,80	B02.312.308
2,5C-FXW	4,80	B02.312.308
ST 121	4,80 max	B02.312.308
ST 214/1-2	5,80±0,1	B02.312.309
3C-2V	5,80±0,5	B02.312.305
ST 120	5,90 max	B02.312.309
2YCY 0,7/4,4	6,00	B02.312.317
2YC(mS)CY 0,5/3,0	6,00	B02.312.317
FLEX 6/75	6,00±0,2	B02.312.317
RG59 B/U	6,15	B02.312.309
ST 271	6,50 max	B02.312.309
3C-2W	6,50±0,5	B02.312.306
BT 2003	6,70	B02.312.306
2YCCY 0,7/4,4	7,40	B02.312.301
FLEX 7/75	7,40±0,4	B02.312.301



CABLE TYPE	OUTER DIA.	PART NUMBER
TZC 75024	3,55±0,15	B02.312.319
BT 3002	3,55±0,15	B02.312.319
EV1CH 0,315/1,95	3,55±0,15	B02.312.319
L910/39	3,70±0,1	B02.312.319
2YCY 0,4/2,5	3,80	B02.312.319
L910/34	3,90	B02.312.319
2YCCY 0,4/2,5	4,50	B02.312.320
FLEX 4/75	4,50±0,1	B02.312.320
FLEX 5/75	4,70±0,1	B02.312.320
2YC(mS)CY 0,4/2,5	4,80	B02.312.320
2,5C-FXW	4,80	B02.312.320
ST 121	4,80 max	B02.312.320

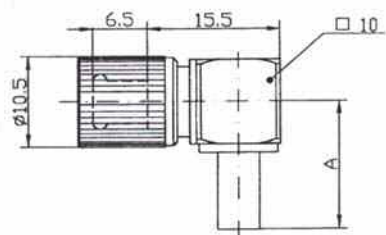


CABLE TYPE	OUTER DIA.	PART NUMBER
RG179 B/U	2,54	B02.312.300
RG187 B/U	2,79	B02.312.300
ST 212/1-2	3,10±0,1	B02.312.311

1.6/5.6 CONNECTORS

RIGHT ANGLE CRIMP PLUGS

Coupling type A (screw)



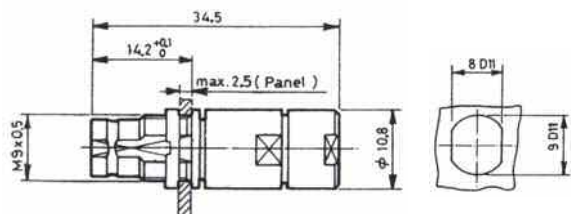
SOLDER CRIMP

A	CABLE TYPE	OUTER DIA.	PART NUMBER
15	RG179 B/U	2,54	B02.112.101
15	RG187 B/U	2,79	B02.112.101
15	FLEX 2/75	2,90 max	B02.112.102
15	ST 212/1-1/2	3,10±0,1	B02.112.103
15	BT 3002	3,55±0,15	B02.112.104
15	FLEX 3/75	3,60±0,1	B02.112.105
15	L910/39	3,70±0,1	B02.112.106
15	2YCY 0,4/2,5	3,80	B02.112.107
15	2,5C-2V	4,00±0,5	B02.112.108
15	2YCCY 0,4/2,5	4,50	B02.112.109
15	FLEX 5/75	4,70±0,1	B02.112.110
15	ST 121	4,80 max	B02.112.111
15	BT 2002	5,10±0,1	B02.112.112
18	ST 214/1-1/2	5,80±0,1	B02.112.113
18	2YCY 0,7/4,4	6,00	B02.112.114
18	RG59 B/U	6,15	B02.112.115
18	ST 271	6,50 max	B02.112.116
18	BT 2003	6,70	B02.112.117

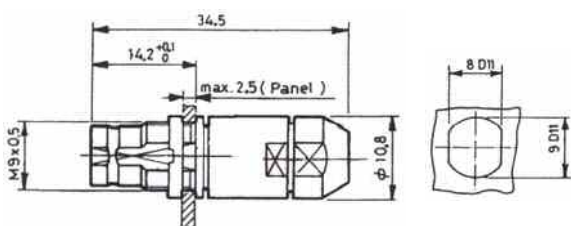
1.6/5.6 CONNECTORS

STRAIGHT CLAMP SOCKETS

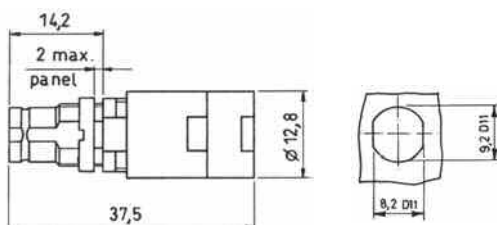
Coupling type A, B, C, D, E



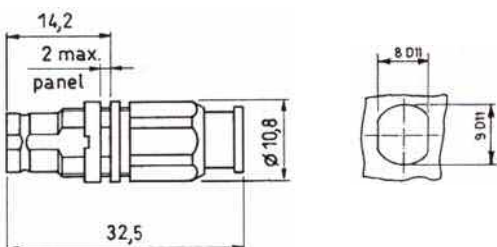
CABLE TYPE	OUTER DIA.	PART NUMBER
2YCCY 0,4/2,5	4,50	B02.711.306
FLEX 4/75	4,50±0,1	B02.711.306
FLEX 5/75	4,70±0,1	B02.711.306
2YC(mS)CY 0,4/2,5	4,80	B02.711.306
2,5C-FXW	4,80	B02.711.306
ST 121	4,80 max	B02.711.306
ST 214/1-/2	5,80±0,1	B02.711.310
ST 120	5,90 max	B02.711.310
2YCY 0,7/4,4	6,00	B02.711.307
2YC (mS)CY 0,5/3,0	6,00	B02.711.307
FLEX 6/75	6,00±0,2	B02.711.307
RG59 B/U	6,15	B02.711.310
ST 271	6,50 max	B02.711.310
2YCCY 0,7/4,4	7,40	B02.711.305
FLEX 7/75	7,40±0,4	B02.711.305
3C-2V	5,80±0,5	B02.711.312



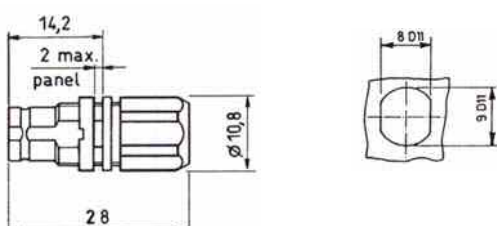
CABLE TYPE	OUTER DIA.	PART NUMBER
TZC 75024	3,55±0,15	B02.711.308
BT 3002	3,55±0,15	B02.711.308
EV1CH 0,315/1,95	3,55±0,15	B02.711.308
FLEX 3/75	3,60±0,1	B02.711.309
L910/39	3,70±0,1	B02.711.308
2YCY 0,4/2,5	3,80	B02.711.308
L910/34	3,90	B02.711.308



CABLE TYPE	OUTER DIA.	PART NUMBER
2YC(mS)C2YCY 0,7/4,4	9,50	B02.711.316
2YCCY 1,0/6,5	9,50	B02.711.317
2YC(mS)CY 1,0/6,5	9,50	B02.711.317



CABLE TYPE	OUTER DIA.	PART NUMBER
RG179 B/U	2,54	B02.711.304
RG187 B/U	2,79	B02.711.304
FLEX 2/75	2,90 max	B02.711.301
ST 212/1-/2	3,10±0,1	B02.711.302

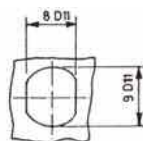
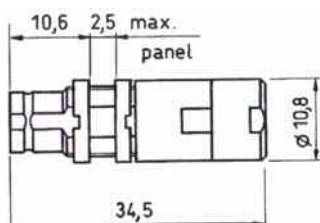


CABLE TYPE	OUTER DIA.	PART NUMBER
2YCCY 0,4/2,5	4,50	B02.711.303
2YC(mS)CY 0,4/2,5	4,80	B02.711.303

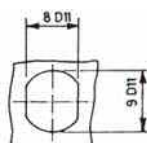
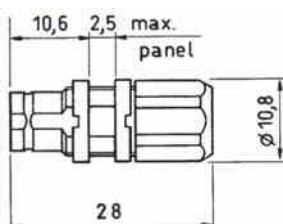
1.6/5.6 CONNECTORS

STRAIGHT CLAMP SOCKETS

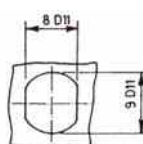
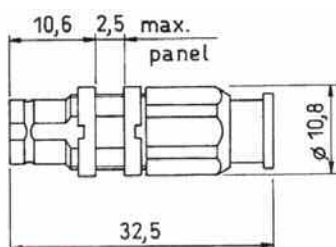
Coupling type A, B, C, D, E



CABLE TYPE	OUTER DIA.	PART NUMBER
2YCCY 0,4/2,5	4,50	B02.741.306
FLEX 4/75	4,50±0,1	B02.741.306
FLEX 5/75	4,70±0,1	B02.741.306
2YC(mS)CY 0,4/2,5	4,80	B02.741.306
2,5C-FXW	4,80	B02.741.306
ST 121	4,80 max	B02.741.306
ST 214/1-/2	5,80±0,1	B02.741.310
ST 120	5,90 max	B02.741.310
2YCY 0,7/4,4	6,00	B02.741.307
2YC (mS)CY 0,5/3,0	6,00	B02.741.307
FLEX 6/75	6,00±0,2	B02.741.307
RG59 B/U	6,15	B02.741.310
ST 271	6,50 max	B02.741.310
2YCCY 0,7/4,4	7,40	B02.741.305
FLEX 7/75	7,40±0,4	B02.741.305



CABLE TYPE	OUTER DIA.	PART NUMBER
TZC 75024	3,55±0,15	B02.741.308
BT 3002	3,55±0,15	B02.741.308
EV1CH 0,315/1,95	3,55±0,15	B02.741.308
L910/39	3,70±0,1	B02.741.308
2YCY 0,4/2,5	3,80	B02.741.308
L910/34	3,90	B02.741.308
2YCCY 0,4/2,5	4,50	B02.741.303
FLEX 4/75	4,50±0,1	B02.741.303
FLEX 5/75	4,70±0,1	B02.741.303
2YC(mS)CY 0,4/2,5	4,80	B02.741.303
2,5C-FXW	4,80	B02.741.303
ST 121	4,80 max	B02.741.303

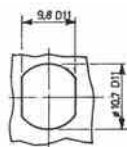
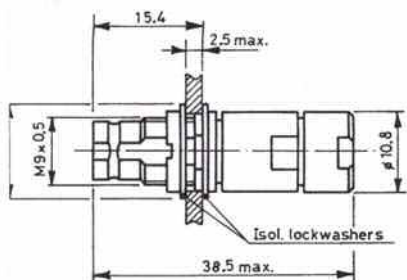


CABLE TYPE	OUTER DIA.	PART NUMBER
RG187 B/U	2,79	B02.741.304
RG179 B/U	2,54	B02.741.304
ST 212/1-/2	3,10±0,1	B02.741.302
FLEX 3/75	3,60±0,1	B02.741.309

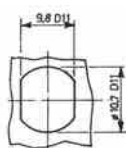
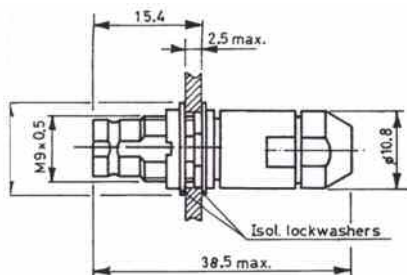
1.6/5.6 CONNECTORS

STRAIGHT INSULATED CLAMP SOCKETS

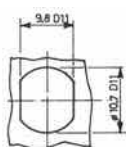
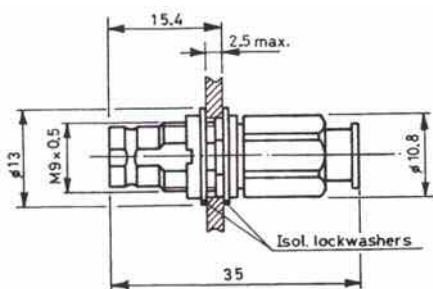
Coupling type A, B, C, D, E



CABLE TYPE	OUTER DIA.	PART NUMBER
2YCCY 0,4/2,5	4,50	B02.710.306
FLEX 4/75	4,50±0,1	B02.710.306
FLEX 5/75	4,70±0,1	B02.710.306
2YC(mS)CY 0,4/2,5	4,80	B02.710.306
2,5C-FXW	4,80	B02.710.306
ST 121	4,80 max	B02.710.306
ST 214/1-/2	5,80±0,1	B02.710.310
3C-2V	5,80±0,5	B02.710.312
ST 120	5,90 max	B02.710.310
2YCY 0,7/4,4	6,00	B02.710.307
2YC(mS)CY 0,5/3,0	6,00	B02.710.307
FLEX 6/75	6,00±0,2	B02.710.307
RG59 B/U	6,15	B02.710.310
ST 271	6,50 max	B02.710.310
3C-2W	6,50±0,5	B02.710.313
BT 2003	6,70	B02.710.313
2YCCY 0,7/4,4	7,40	B02.710.305
FLEX 7/75	7,40±0,4	B02.710.305



CABLE TYPE	OUTER DIA.	PART NUMBER
1,5C-XW	3,30	B02.710.308
FLEX 3/75	3,60±0,1	B02.710.309
2YCY 0,4/2,5	3,80	B02.710.308
2,5C-2V	4,00±0,5	B02.710.311



CABLE TYPE	OUTER DIA.	PART NUMBER
RG179 B/U	2,54	B02.710.304
RG187 B/U	2,79	B02.710.304
1,5C-2V	2,85	B02.710.301
FLEX 2/75	2,90 max	B02.710.301
ST 212/1-/2	3,10±0,1	B02.710.302

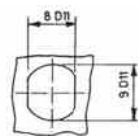
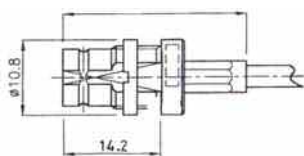
1.6/5.6 CONNECTORS

STRAIGHT CRIMP SOCKETS

Coupling type A, B, C, D, E



L = see table

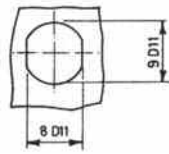
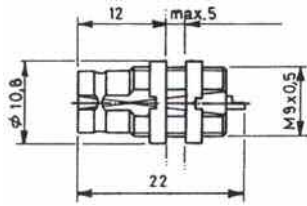


L	CABLE TYPE	OUTER DIA.	PART NUMBER
26,5	FLEX 2/75	2,90 max	B02.721.201
26,5	ST 212/1-1/2	3,10±0,1	B02.721.202
26,5	BT 3002	3,55±0,15	B02.721.203
26,5	FLEX 3/75	3,60±0,1	B02.721.204
26,5	FLEX 5/75	4,70±0,1	B02.721.205
29,5	BT 2002	5,10±0,1	B02.721.206
29,5	ST 214/1-1/2	5,80±0,1	B02.721.207
29,5	FLEX 6/75	6,00±0,2	B02.721.208
29,5	2YCCY 0,4/2,5	4,50	B02.721.209
29,7	TR-SP.127- L910-39	3,70±0,1	B02.721.210
31,7	BT2003	6,70	B02.721.211

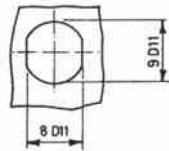
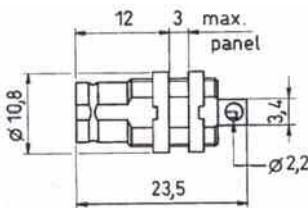
1.6/5.6 CONNECTORS

STRAIGHT BULKHEAD SOCKETS

PART NUMBER

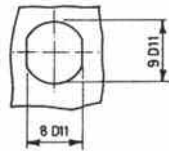
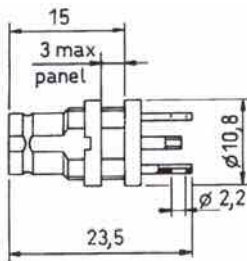


B02.741.001



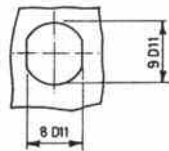
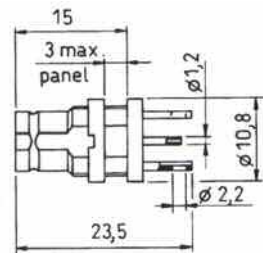
Equipped with soldering tags on outer conductor

B02.741.002



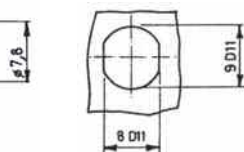
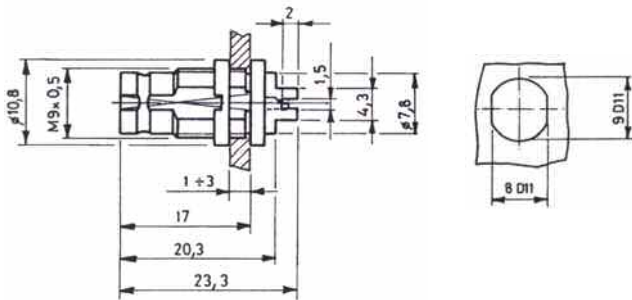
Equipped with soldering tags on outer conductor and rear flange

B02.721.001

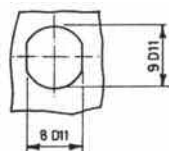
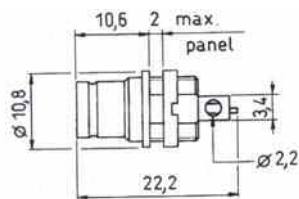


Equipped with soldering tags on outer conductor and rear flange

B02.721.002

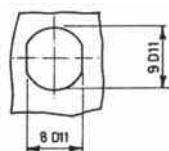
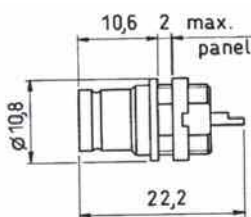


B02.721.003



Equipped with soldering tags on outer conductor

B02.821.001

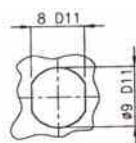
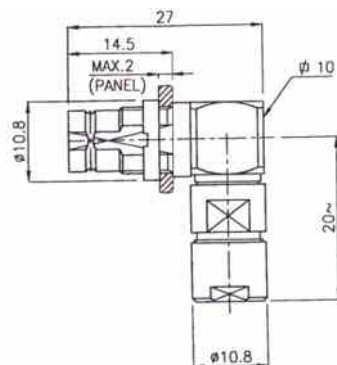


B02.821.002

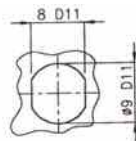
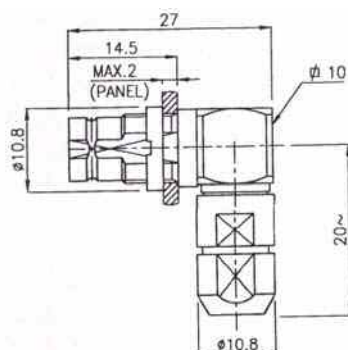
1.6/5.6 CONNECTORS

RIGHT ANGLE CLAMP SOCKETS

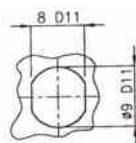
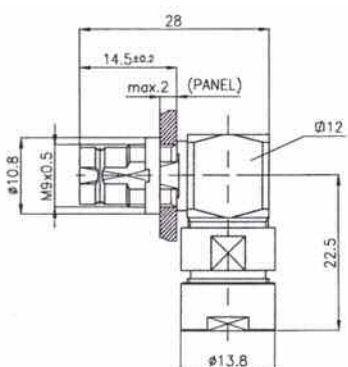
Coupling type A, B, C, D, E



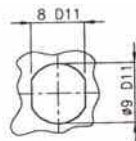
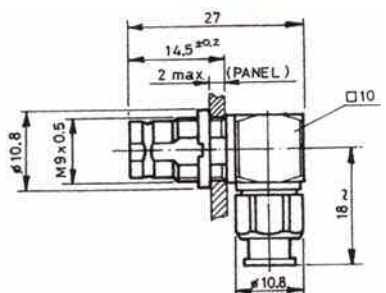
CABLE TYPE	OUTER DIA.	PART NUMBER
2YCCY 0,4/2,5	4,50	B02.712.308
FLEX 4/75	4,50±0,1	B02.712.308
FLEX 5/75	4,70±0,1	B02.712.308
2YC(mS)CY 0,4/2,5	4,80	B02.712.308
2,5C-FXW	4,80	B02.712.308
ST 121	4,80 max	B02.712.308
BT 2002	5,10±0,1	B02.712.308
ST 214/1-/2	5,80±0,1	B02.712.309
3C-2V	5,80±0,5	B02.712.305
ST 120	5,90 max	B02.712.309
2YCY 0,7/4,4	6,00	B02.712.317
2YC(mS)CY 0,5/3,0	6,00	B02.712.317
FLEX 6/75	6,00±0,2	B02.712.317
RG59 B/U	6,15	B02.712.309
ST 271	6,50 max	B02.712.309
3C-2W	6,50±0,5	B02.712.306
BT 2003	6,70	B02.712.306
2YCCY 0,7/4,4	7,40	B02.712.301
FLEX 7/75	7,40±0,4	B02.712.301



CABLE TYPE	OUTER DIA.	PART NUMBER
TZC 75024	3,55±0,15	B02.712.302
BT 3002	3,55±0,15	B02.712.302
EV1CH 0,315/1,95	3,55±0,15	B02.712.302
FLEX 3/75	3,60±0,1	B02.712.304
L910/39	3,70±0,1	B02.712.318
2YCY 0,4/2,5	3,80	B02.712.318
L910/34	3,90	B02.712.318
2,5C-2V	4,00±0,5	B02.712.307



CABLE TYPE	OUTER DIA.	PART NUMBER
2YC(mS)C2YCY 0,7/4,4	9,50	B02.712.320
2YC(mS)CY 1,0/6,5	9,50	B02.712.321
2YCCY 1,0/6,5	9,50	B02.712.321

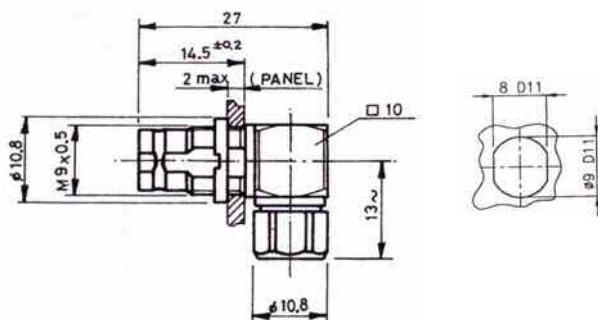


CABLE TYPE	OUTER DIA.	PART NUMBER
RG179 B/U	2,54	B02.712.300
RG187 B/U	2,79	B02.712.300
1,5C-2V	2,85	B02.712.316
FLEX 2/75	2,90 max	B02.712.316
ST 212/1-/2	3,10±0,1	B02.712.311

1.6/5.6 CONNECTORS

RIGHT ANGLE CLAMP SOCKETS

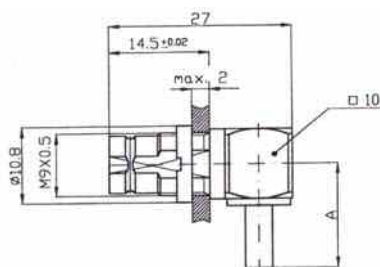
Coupling type A, B, C, D, E



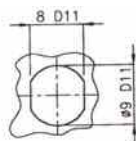
CABLE TYPE	OUTER DIA.	PART NUMBER
2YCY 0,4/2,5	3,80	B02.712.323
2YC(mS)CY 0,4/2,5	4,80	B02.712.322
2YCCY 0,4/2,5	4,50	B02.712.322
FLEX 4/75	4,50±0,1	B02.712.322
FLEX 5/75	4,70±0,1	B02.712.322
2,5C-FXW	4,80	B02.712.322
ST 121	4,80 max	B02.712.322
TZC 75024	3,55±0,15	B02.712.323
EV1CH 0,315/1,95	3,55±0,15	B02.712.323
BT 3002	3,55±0,15	B02.712.323
L910/34	3,90	B02.712.323
L910/39	3,70±0,1	B02.712.323

1.6/5.6 CONNECTORS

RIGHT ANGLE CRIMP SOCKETS Coupling type A, B, C, D, E



SOLDER CRIMP



A	CABLE TYPE	OUTER DIA.	PART NUMBER
15	RG179 B/U	2,54	B02.712.101
15	RG187 B/U	2,79	B02.712.101
15	FLEX 2/75	2,90 max	B02.712.102
15	ST 212/1-/2	3,10±0,1	B02.712.103
15	BT 3002	3,55±0,15	B02.712.104
15	FLEX 3/75	3,60±0,1	B02.712.105
15	L910/34	3,90	B02.712.106
15	2,5C-2V	4,00±0,5	B02.712.108
15	2YCCY 0,4/2,5	4,50	B02.712.109
15	FLEX 5/75	4,70±0,1	B02.712.110
15	ST 121	4,80 max	B02.712.111
15	BT 2002	5,10±0,1	B02.712.112
18	ST 214/1-/2	5,80±0,1	B02.712.113
18	FLEX 6/75	6,00±0,2	B02.712.115
18	RG59 B/U	6,15	B02.712.115
18	ST 271	6,50 max	B02.712.116
18	BT 2003	6,70	B02.712.117

1.6/5.6 CONNECTORS

STRAIGHT PCB SOCKETS

Coupling type A, B, C, D, E



PART NUMBER

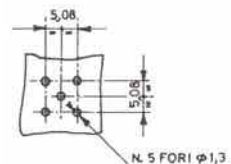
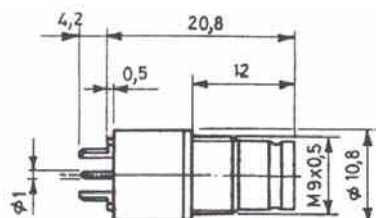
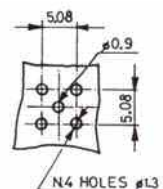
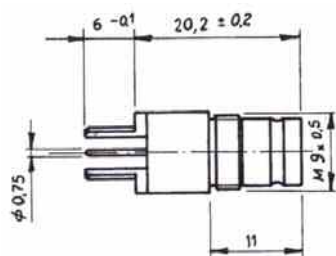
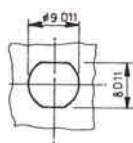
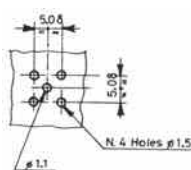
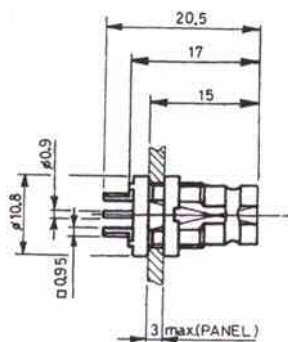
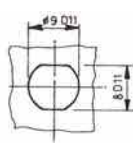
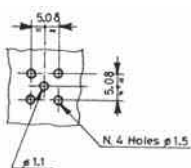
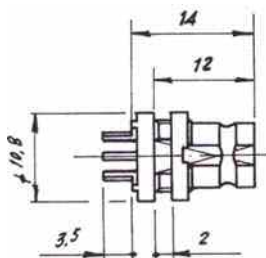
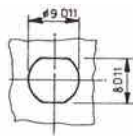
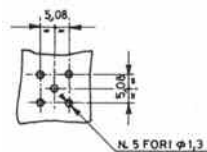
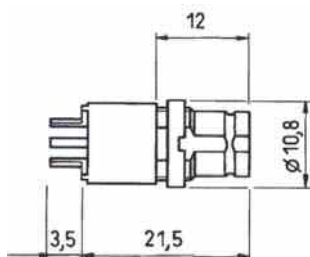
B02.731.001

B02.731.004

B02.731.005

B02.731.002

B02.731.006

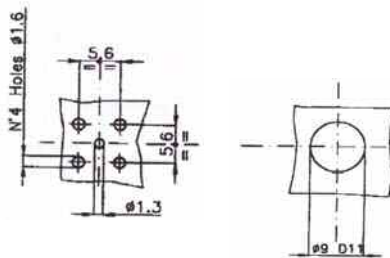
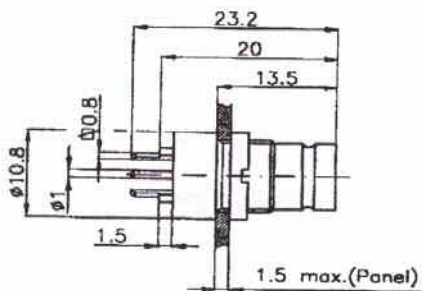


1.6/5.6 CONNECTORS

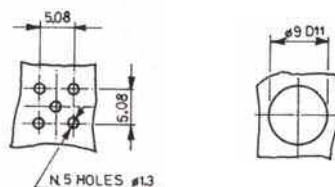
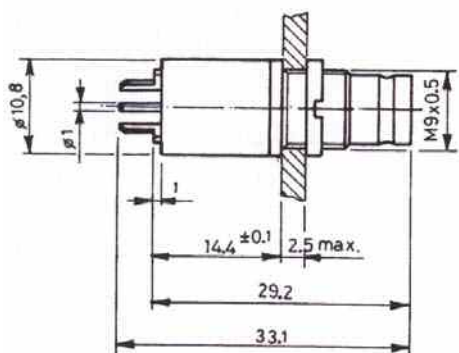
STRAIGHT PCB SOCKETS Coupling type A, B, C, D, E



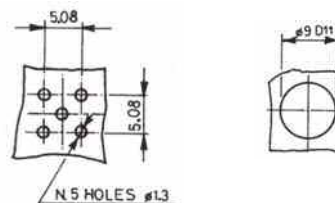
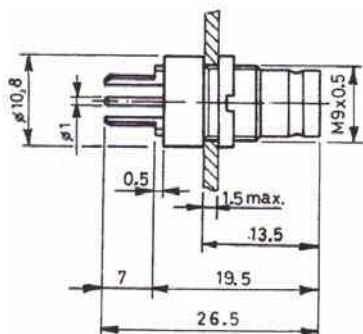
PART NUMBER



B02.731.008



B02.731.009



B02.731.010

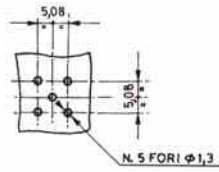
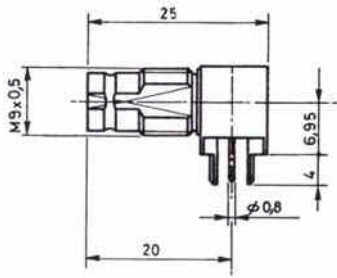
1.6/5.6 CONNECTORS

RIGHT ANGLE PCB SOCKETS

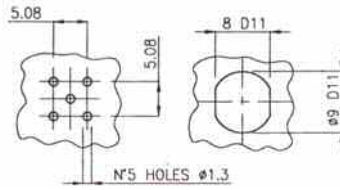
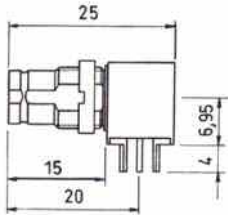
Coupling type A, B, C, D, E



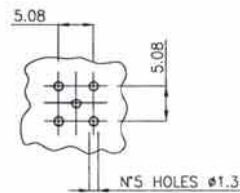
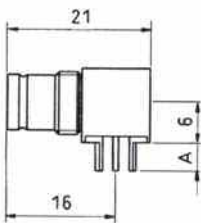
PART NUMBER



B02.732.003



B02.732.004

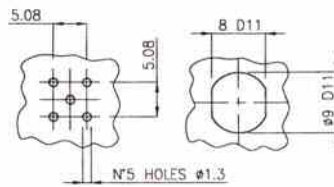
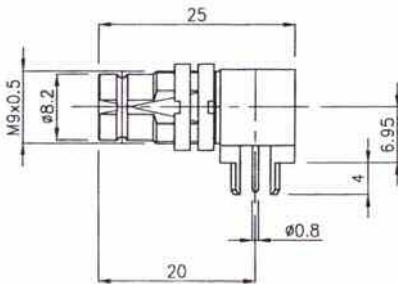


A= 4 mm.

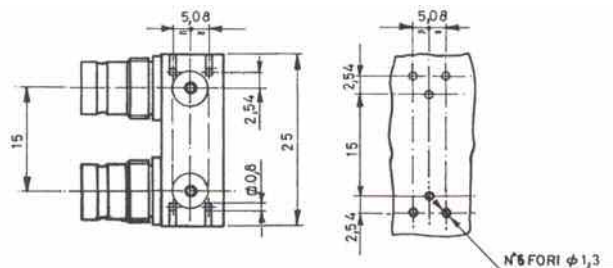
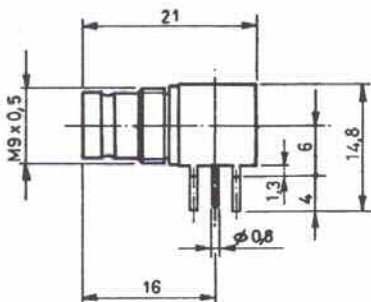
B02.732.001

A= 3,2 mm.

B02.732.002



B02.732.005



B02.732.006

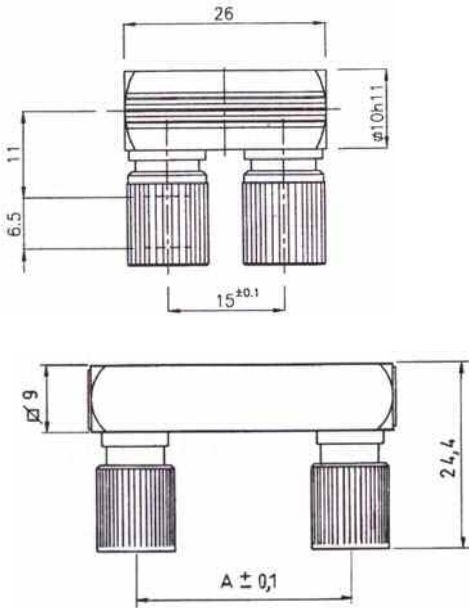
1.6/5.6 CONNECTORS

U-LINK PLUGS Coupling type A (screw) and B (snap on)



PART NUMBER

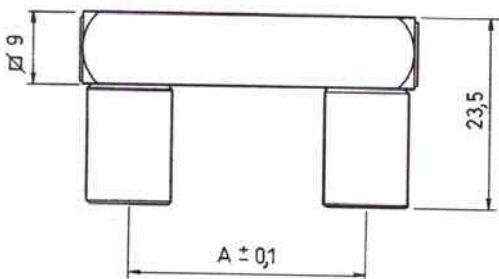
Coupling type A (screw)



B02.154.901

A mm.	PART NUMBER
20	B02.154.902
25	B02.154.903
30	B02.154.904
35	B02.154.905
40	B02.154.906
45	B02.154.907
50	B02.154.908
55	B02.154.909
60	B02.154.910
65	B02.154.911
70	B02.154.912
23	B02.154.913
75	B02.154.914
21	B02.154.915
41,5	B02.154.916
71	B02.154.917
45,5	B02.154.918
46,4	B02.154.919

Coupling type B (snap-on)



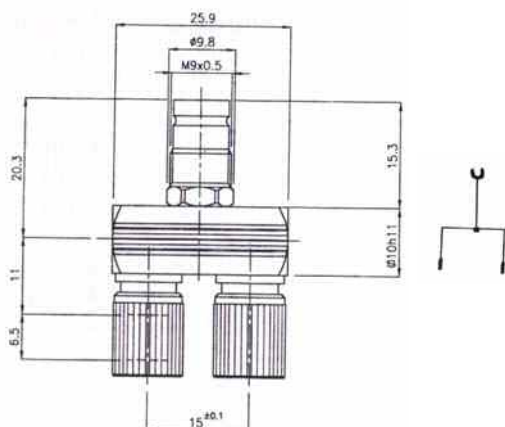
A mm.	PART NUMBER
15	B02.254.901
20	B02.254.902
25	B02.254.903
30	B02.254.904
35	B02.254.905
40	B02.254.906
45	B02.254.907
50	B02.254.908
55	B02.254.909
60	B02.254.910
65	B02.254.911
70	B02.254.912
23	B02.254.913
75	B02.254.914
80	B02.254.915
85	B02.254.916
90	B02.254.917
100	B02.254.918
21	B02.254.919

1.6/5.6 CONNECTORS

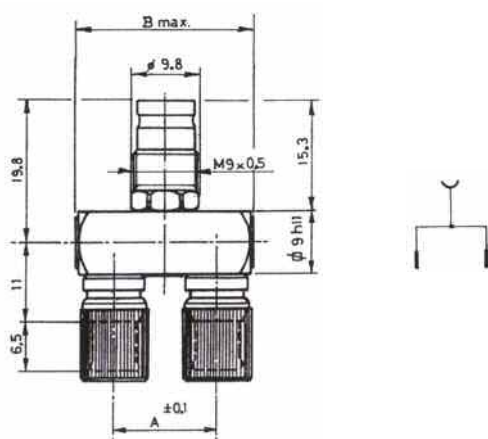
MONITOR POINTS Y TYPE



PART NUMBER



B02.665.901

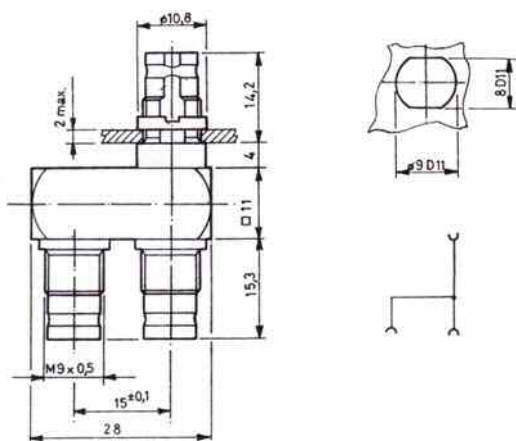


A = $15 \pm 0,1$ mm. B = 25,8 mm.

B02.665.902

A = $21 \pm 0,1$ mm. B = 32,2 mm.

B02.665.903



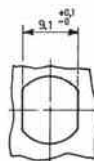
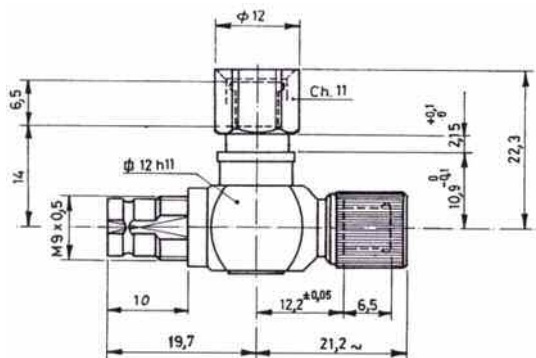
B02.665.904

1.6/5.6 CONNECTORS

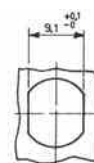
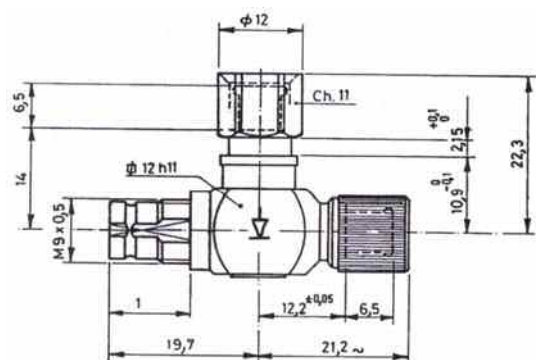
MONITOR POINTS T TYPE



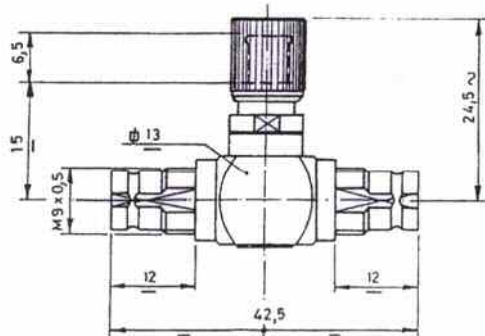
PART NUMBER



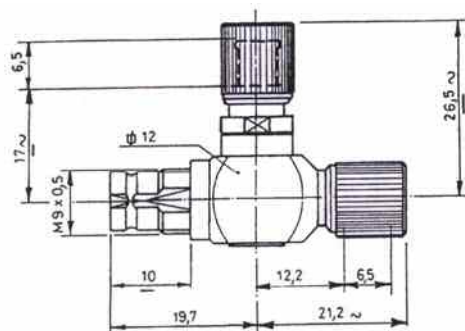
B02.666.901



B02.666.902



B02.666.903



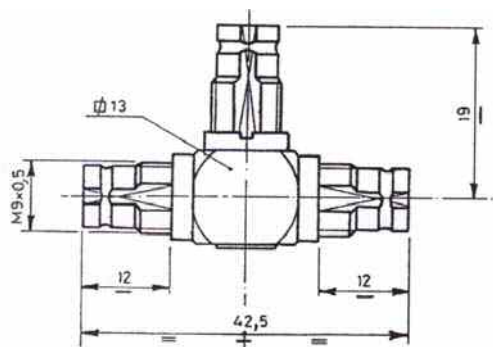
B02.666.904

1.6/5.6 CONNECTORS

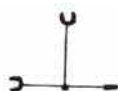
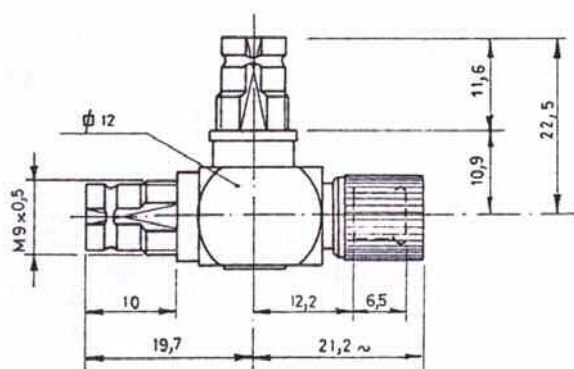
MONITOR POINTS T TYPE



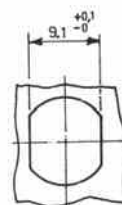
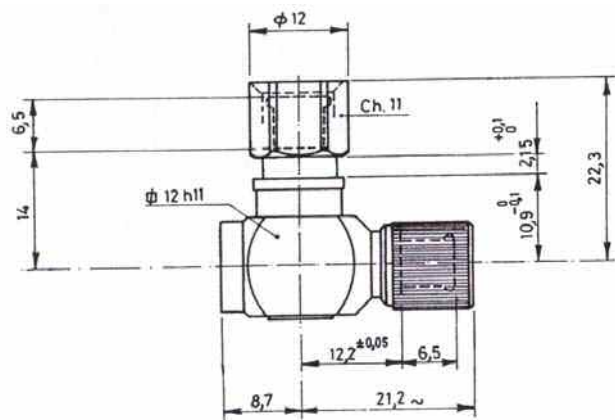
PART NUMBER



B02.666.905



B02.666.906



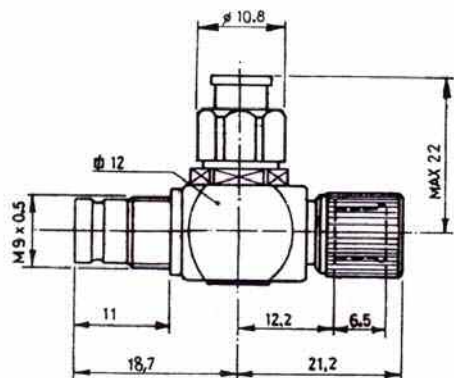
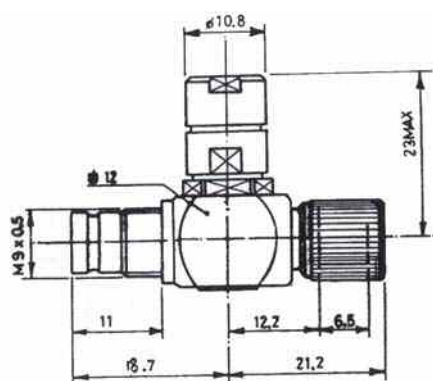
B02.257.901

1.6/5.6 CONNECTORS

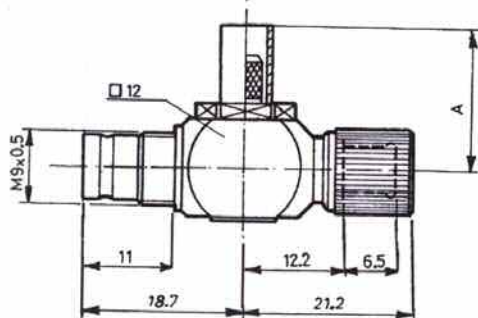
MONITOR POINTS T TYPE (Plug – socket – cable)



SOLDER CLAMP



SOLDER CRIMP



CABLE CODE	OUTER DIA.	PART NUMBER
2,5C-2V	4,00±0,5	B02.666.305
2YCCY 0,4/2,5	4,50	B02.666.301
FLEX 4/75	4,50±0,1	B02.666.301
FLEX 5/75	4,70±0,1	B02.666.301
2,5C-FXW	4,80	B02.666.301
2YC(mS)CY 0,4/2,5	4,80	B02.666.301
ST 121	4,80 max	B02.666.301
ST 214/1-/2	5,80±0,1	B02.666.306
3C-2V	5,80±0,5	B02.666.303
ST 120	5,90 max	B02.666.306
2YCY 0,7/4,4	6,00	B02.666.302
2YC(mS)CY 0,5/3,0	6,00	B02.666.302
FLEX 6/75	6,00±0,2	B02.666.302
RG59 B/U	6,15	B02.666.306
ST 271	6,50 max	B02.666.306
3C-2W	6,50±0,5	B02.666.304
BT 2003	6,70	B02.666.304

CABLE CODE	OUTER DIA.	PART NUMBER
RG179 B/U	2,54	B02.666.310
RG187 B/U	2,79	B02.666.310
1,5C-2V	2,85	B02.666.311
FLEX 2/75	2,90 max	B02.666.311
ST 212/1-/2	3,10±0,1	B02.666.312

A	CABLE CODE	OUTER DIA.	PART NUMBER
17	RG179 B/U	2,54	B02.666.107
17	RG187 B/U	2,79	B02.666.107
17	1,5C-2V	2,85	B02.666.106
17	FLEX 2/75	2,90 max	B02.666.106
17	ST 212/1-/2	3,10±0,1	B02.666.108
17	2,5C-2V	4,00±0,5	B02.666.105
17	2YCCY 0,4/2,5	4,50	B02.666.101
17	FLEX 4/75	4,50±0,1	B02.666.101
17	FLEX 5/75	4,70±0,1	B02.666.101
17	2,5C-FXW	4,80	B02.666.101
17	2YC(mS)CY 0,4/2,5	4,80	B02.666.101
17	ST 121	4,80 max	B02.666.101
17	ST 214/1-/2	5,80±0,1	B02.666.109
17	ST 120	5,90 max	B02.666.109
17	RG59 B/U	6,15	B02.666.109
17	ST 271	6,50 max	B02.666.109
20	2YCY 0,7/4,4	6,00	B02.666.102
20	3C-2V	5,80±0,5	B02.666.103
20	2YC(mS)CY 0,5/3,0	6,00	B02.666.102
20	FLEX 6/75	6,00±0,2	B02.666.102
20	3C-2W	6,50±0,5	B02.666.104
20	BT 2003	6,70	B02.666.104

1.6/5.6 CONNECTORS

DECOUPLED MONITOR POINTS Y TYPE

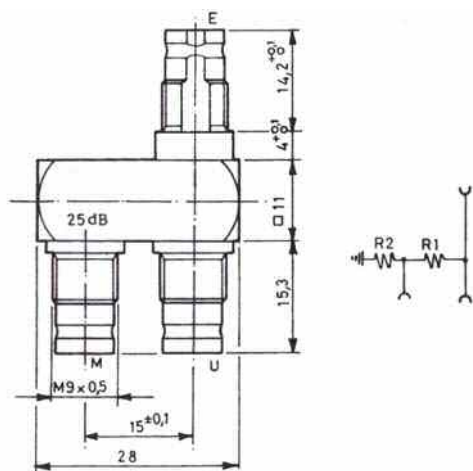
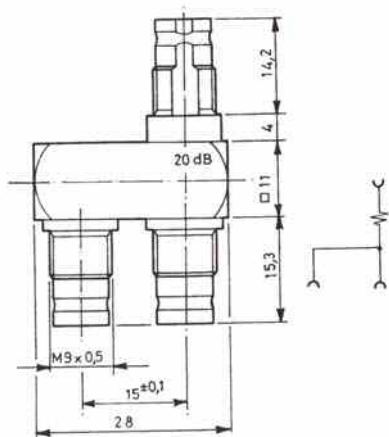
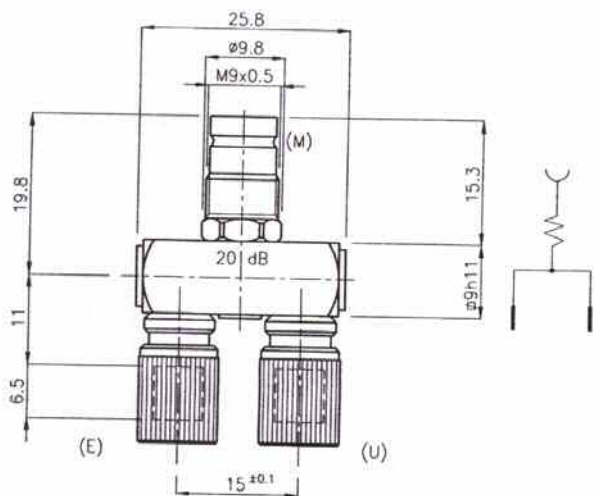


PART NUMBER

B02.675.901

B02.675.902

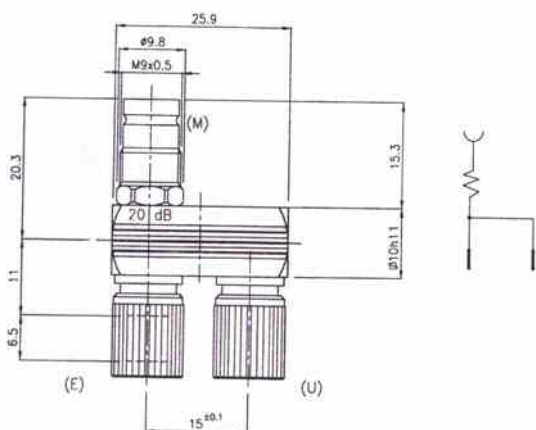
B02.675.903



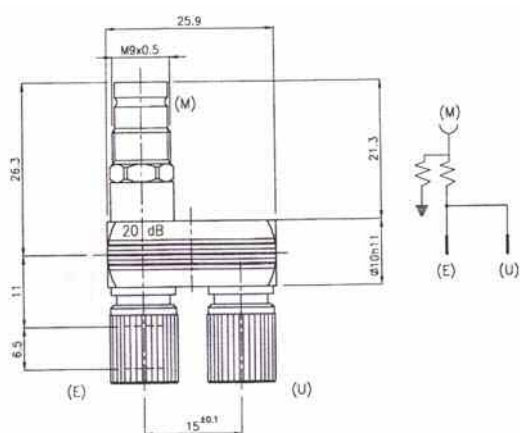
1.6/5.6 CONNECTORS

DECOUPLED MONITOR POINTS Y TYPE

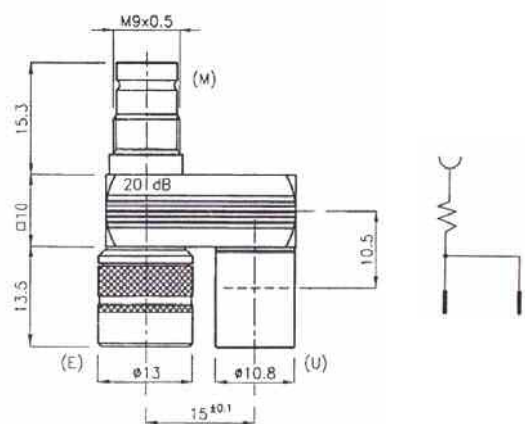
PART NUMBER



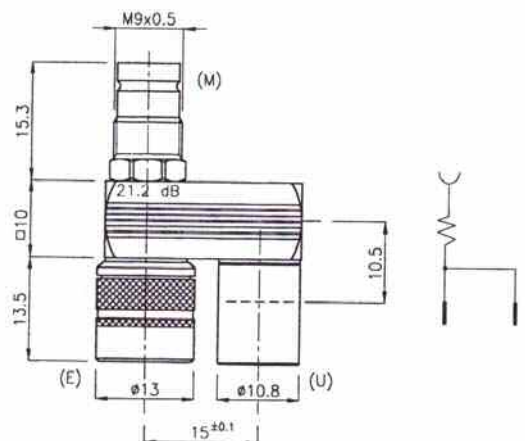
B02.675.910



B02.675.911



B02.675.912



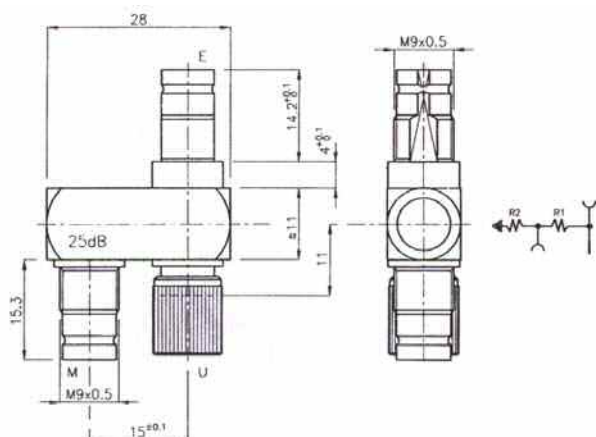
B02.675.913

1.6/5.6 CONNECTORS

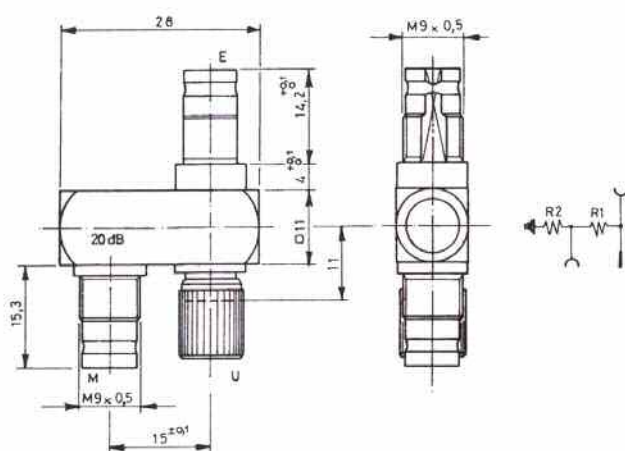
DECOUPLED MONITOR POINTS Y TYPE



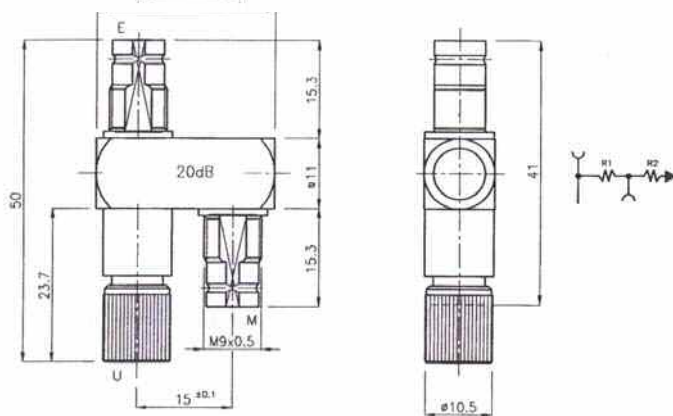
PART NUMBER



B02.675.921



B02.675.922



B02.675.923

1.6/5.6 CONNECTORS

DECOUPLED MONITOR POINTS T TYPE



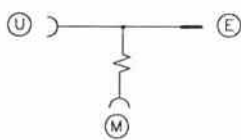
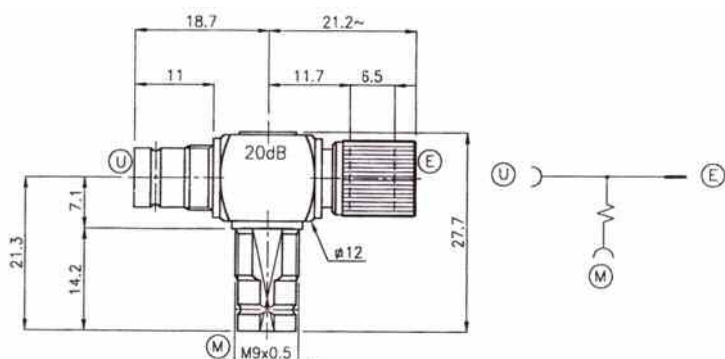
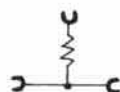
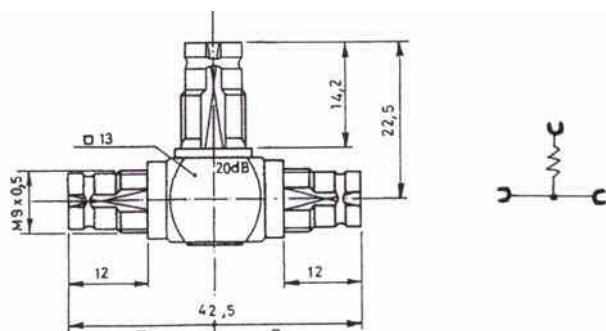
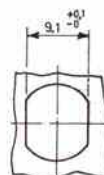
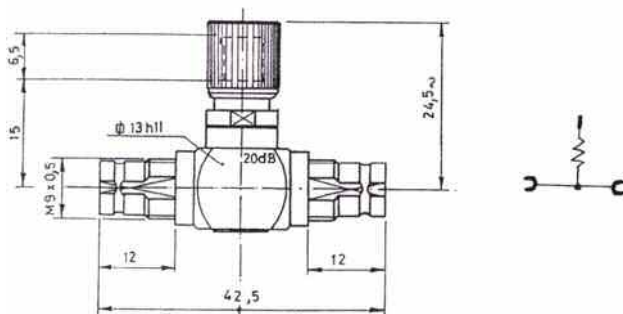
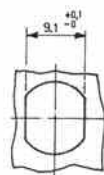
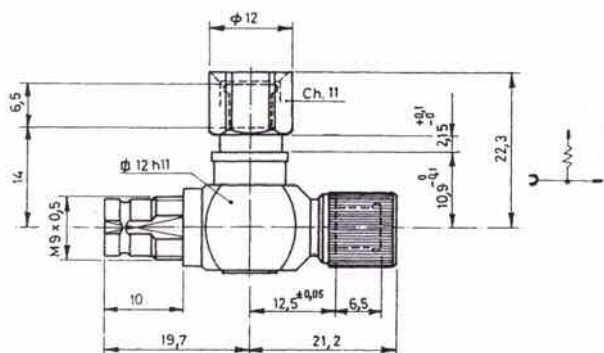
PART NUMBER

B02.676.901

B02.676.902

B02.676.903

B02.676.904

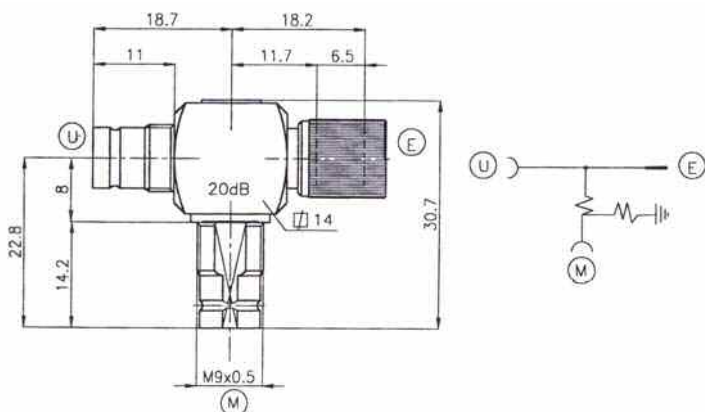


1.6/5.6 CONNECTORS

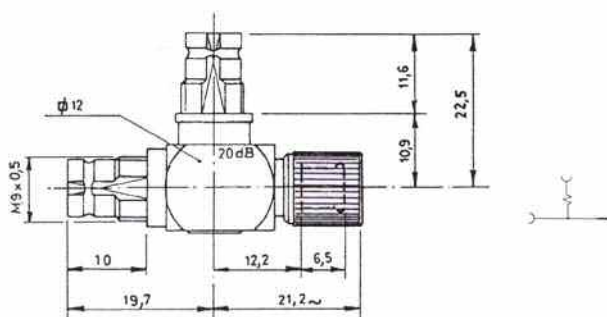
DECOUPLED MONITOR POINTS T TYPE



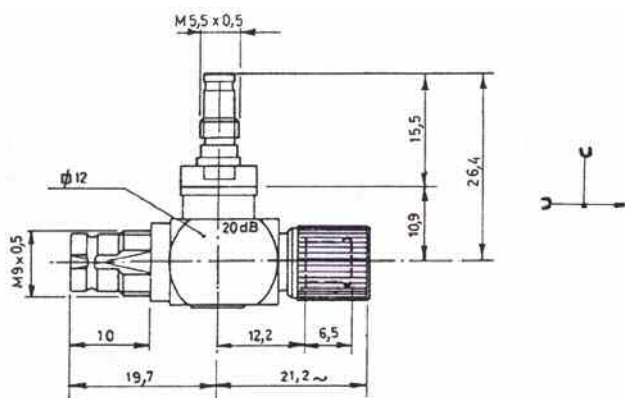
PART NUMBER



B02.676.905



B02.676.906



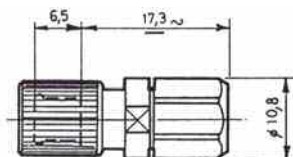
B02.676.907

1.6/5.6 CONNECTORS

TERMINATIONS

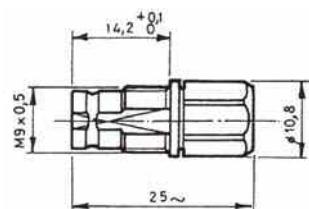


PART NUMBER



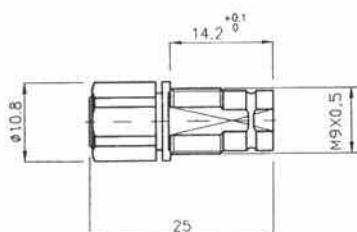
1.6/5.6 straight plug (1/4 W) termination

B02.181.901



1.6/5.6 straight socket (1/4 W) termination

B02.881.901



1.6/5.6 short circuit socket

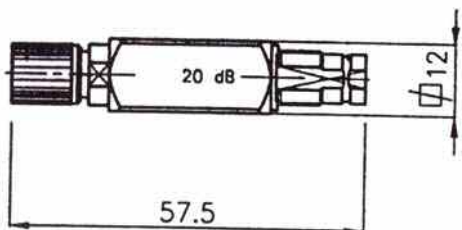
B02.881.902

1.6/5.6 CONNECTORS

ATTENUATORS

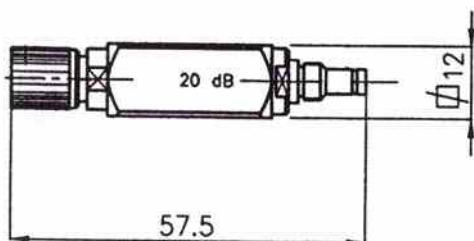


PART NUMBER



Attenuator 1.6/5.6 plug – 1.6/5.6 socket

B02.681.901



Attenuator 1.6/5.6 plug – 1.0/2.3 socket

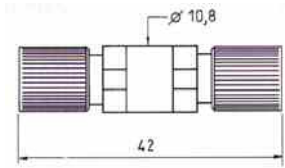
B02.681.902

1.6/5.6 ADAPTERS

1.6/5.6 – 1.6/5.6

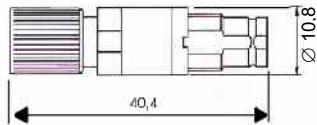


PART NUMBER



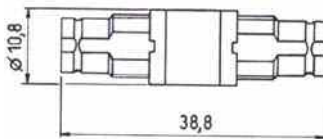
1.6/5.6 plug – 1.6/5.6 plug

B02.221.110



1.6/5.6 plug – 1.6/5.6 socket

B02.221.120



1.6/5.6 socket – 1.6/5.6 socket

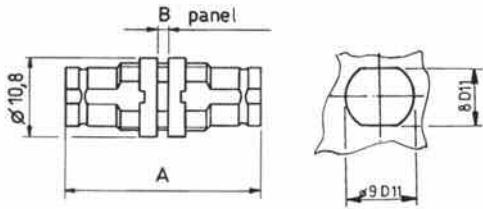
B02.221.220

1.6/5.6 ADAPTERS

1.6/5.6 – 1.6/5.6

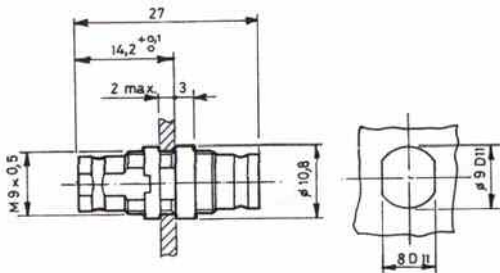


PART NUMBER



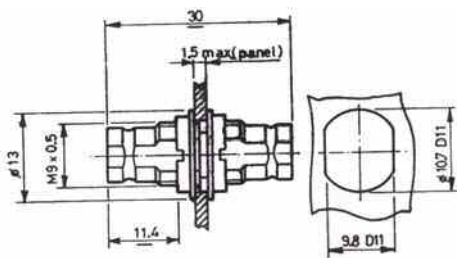
Bulkhead
1.6/5.6 socket – 1.6/5.6 socket
A= 27 mm. – B= 1,5 mm.
A= 30 mm. – B= 5 mm.

B02.224.221
B02.224.222



Bulkhead
1.6/5.6 socket – 1.6/5.6 socket

B02.224.223



Bulkhead
1.6/5.6 socket – 1.6/5.6 socket

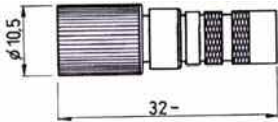
B02.224.224

1.6/5.6 ADAPTERS

1.6/5.6 – 1.0/2.3

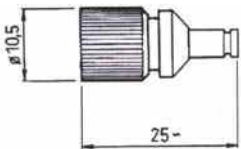


PART NUMBER



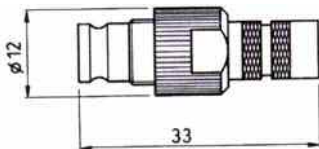
1.6/5.6 plug – 1.0/2.3 plug push pull

B02.211.130



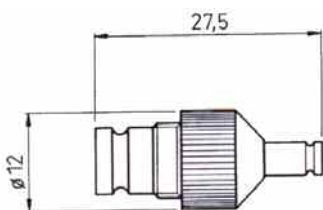
1.6/5.6 plug – 1.0/2.3 socket

B02.211.120



1.6/5.6 socket – 1.0/2.3 plug push pull

B02.211.230



1.6/5.6 socket – 1.0/2.3 socket

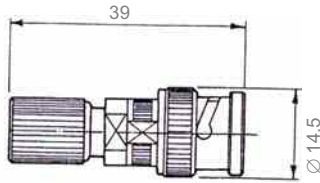
B02.211.220

1.6/5.6 ADAPTERS

1.6/5.6 – BNC

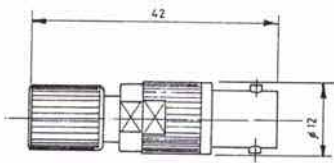


PART NUMBER



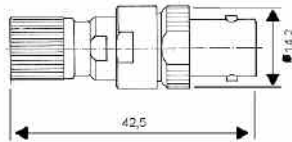
1.6/5.6 plug – BNC plug

B02.231.110



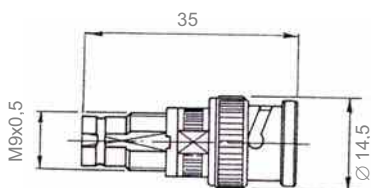
1.6/5.6 plug – BNC socket

B02.231.120



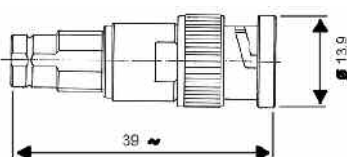
1.6/5.6 plug – BNC socket

B02.231.121



1.6/5.6 socket – BNC plug

B02.231.210



1.6/5.6 socket – BNC plug

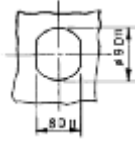
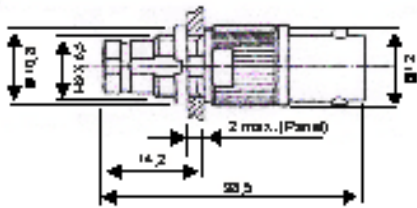
B02.231.211

1.6/5.6 ADAPTERS

1.6/5.6 – BNC



PART NUMBER



1.6/5.6 bulkhead socket – BNC socket

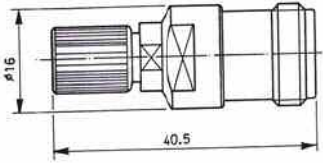
B02.234.220

1.6/5.6 ADAPTERS

1.6/5.6 – N

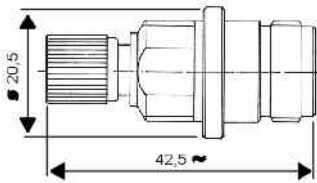


PART NUMBER



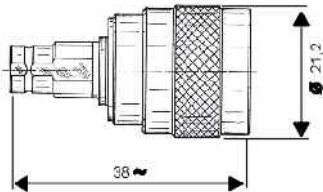
1.6/5.6 plug – N socket

B02.241.120



1.6/5.6 plug – N socket

B02.241.121



1.6/5.6 socket – N plug

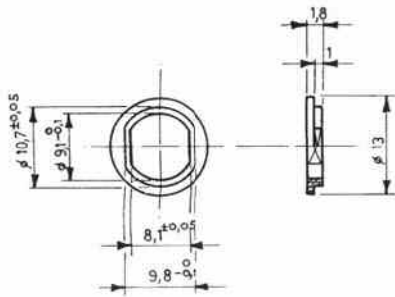
B02.241.210

1.6/5.6 ACCESSORIES

INSULATORS – CAPS

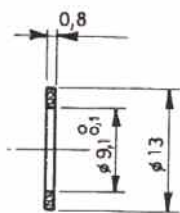


PART NUMBER



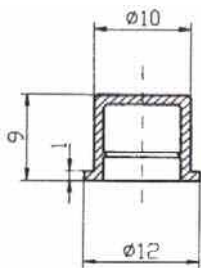
Insulator of grounded washer for 1.6/5.6 sockets

B02.900.901



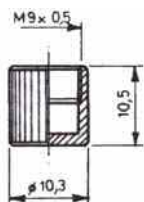
Insulator of grounded washer for 1.6/5.6 sockets

B02.900.902



Plastic protection cap for 1.6/5.6 sockets

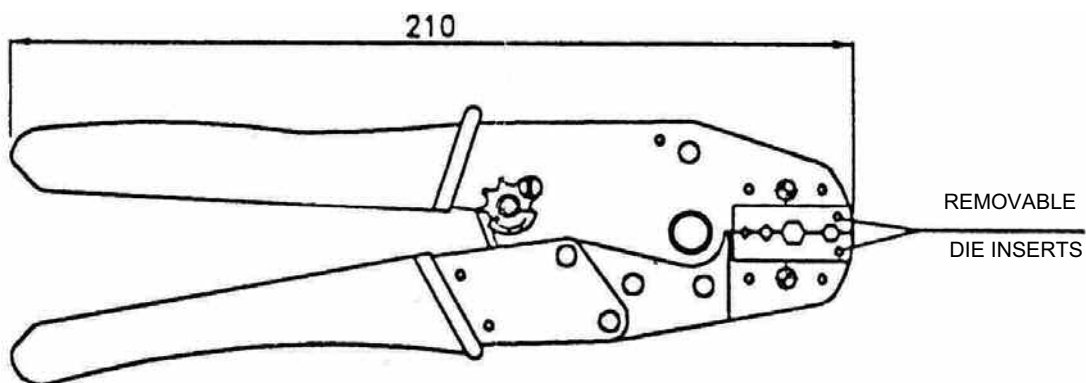
B02.900.900



Metal protection cap for 1.6/5.6 sockets

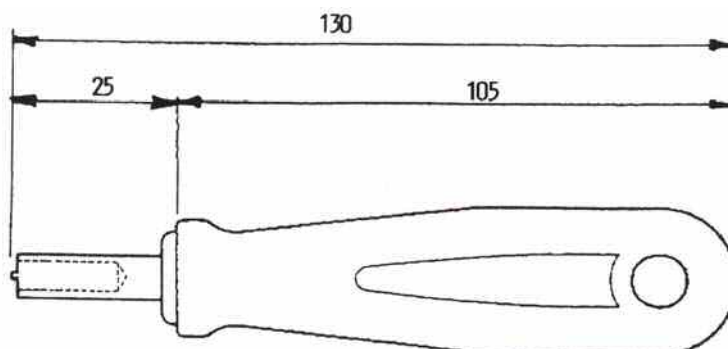
B02.901.900

CRIMPING TOOL



CRIMPING DIE INSERT						PART NUMBER
□ SQUARE			⬡ HEXAGON			
0,7	1			3,8	6,8	B02.110.101
0,7		1,2		3,4	6,35	B02.110.102
0,7		1,2		4,06	5,41	B02.110.103
0,7				3,25	4,52	B02.110.104
0,7				2,7	3,25	B02.110.105
		1,2		5,41	6,48	B02.110.106
0,7		1,2		3,8	6,8	B02.110.107
0,7				3,4	3,8	B02.110.108
			1,7	5,41	6,48	B02.110.109
				1,7	4,52	B02.110.110
			1,7	3,8	6,8	B02.110.111
				3,8	6,8	B02.110.112
		1,2		3,25	4,52	B02.110.113
0,7		1,2		3,8	4,52	B02.110.114
0,7		1,2	1,7	3,8	5,2	B02.110.115
				5,41	8,16	B02.110.116
		1,2	3,25	4,52	5,41	B02.110.117
0,7		1,2		3,25	3,2/2,3	B02.110.118
		1,2	3,25	3,8	6,8	B02.110.119
0,7		1,2		4,52	6,48	B02.110.120
				5,1	5,41	B02.110.121
		1,2		3,25	3,8	B02.110.122

SCREW TOOL FOR 1.6/5.6 JACKS



B02.120.110

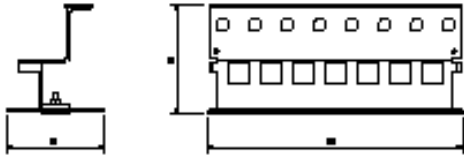
1.6/5.6 ACCESSORIES

TERMINATION STRIPS FOR DIGITAL DISTRIBUTION FRAMES

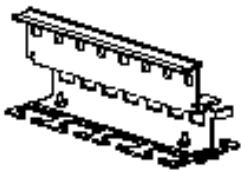


PART NUMBER

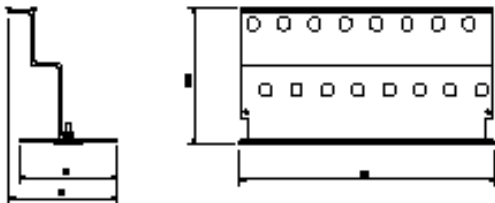
8 POSITION STRIPS



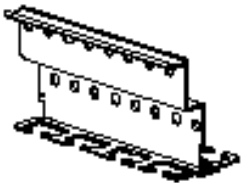
B02.311.008



16 POSITION STRIPS



B02.311.016



1.6/5.6 CONNECTORS

PART NUMBER - PAGE REFERENCE CHART



PART NUMBER	PAGE	PART NUMBER	PAGE	PART NUMBER	PAGE	PART NUMBER	PAGE
B02.111.201	9	B02.112.320	11	B02.254.914	26	B02.666.109	30
B02.111.202	9	B02.112.321	11	B02.254.915	26	B02.666.301	30
B02.111.203	9	B02.141.001	10	B02.254.916	26	B02.666.302	30
B02.111.204	9	B02.141.002	10	B02.254.917	26	B02.666.303	30
B02.111.205	9	B02.154.901	26	B02.254.918	26	B02.666.304	30
B02.111.206	9	B02.154.902	26	B02.254.919	26	B02.666.305	30
B02.111.207	9	B02.154.903	26	B02.257.901	29	B02.666.306	30
B02.111.208	9	B02.154.904	26	B02.312.300	13	B02.666.310	30
B02.111.301	5	B02.154.905	26	B02.312.301	13	B02.666.311	30
B02.111.302	5	B02.154.906	26	B02.312.302	13	B02.666.312	30
B02.111.304	5	B02.154.907	26	B02.312.304	13	B02.666.901	28
B02.111.305	5	B02.154.908	26	B02.312.305	13	B02.666.902	28
B02.111.306	5	B02.154.909	26	B02.312.306	13	B02.666.903	28
B02.111.307	5	B02.154.910	26	B02.312.307	13	B02.666.904	28
B02.111.308	5	B02.154.911	26	B02.312.308	13	B02.666.905	29
B02.111.309	5	B02.154.912	26	B02.312.309	13	B02.666.906	29
B02.111.310	5	B02.154.913	26	B02.312.311	13	B02.675.901	31
B02.111.311	5	B02.154.914	26	B02.312.317	13	B02.675.902	31
B02.111.312	5	B02.154.915	26	B02.312.318	13	B02.675.903	31
B02.111.313	5	B02.154.916	26	B02.312.319	13	B02.675.910	32
B02.111.314	5	B02.154.917	26	B02.312.320	13	B02.675.911	32
B02.111.315	5	B02.154.918	26	B02.321.301	7	B02.675.912	32
B02.111.316	5	B02.154.919	26	B02.321.302	7	B02.675.913	32
B02.111.317	5	B02.181.901	36	B02.321.303	7	B02.675.921	33
B02.112.101	14	B02.211.305	6	B02.321.304	7	B02.675.922	33
B02.112.102	14	B02.211.306	6	B02.321.305	7	B02.675.923	33
B02.112.103	14	B02.211.307	6	B02.321.306	7	B02.676.901	34
B02.112.104	14	B02.211.308	6	B02.321.307	7	B02.676.902	34
B02.112.105	14	B02.211.309	6	B02.321.308	7	B02.676.903	34
B02.112.106	14	B02.211.310	6	B02.321.309	7	B02.676.904	34
B02.112.107	14	B02.211.312	6	B02.321.310	7	B02.676.905	35
B02.112.108	14	B02.211.313	6	B02.321.312	7	B02.676.906	35
B02.112.109	14	B02.212.301	12	B02.321.313	7	B02.676.907	35
B02.112.110	14	B02.212.302	12	B02.441.001	10	B02.681.901	37
B02.112.111	14	B02.212.304	12	B02.441.002	10	B02.681.902	37
B02.112.112	14	B02.212.305	12	B02.511.305	8	B02.710.301	17
B02.112.113	14	B02.212.306	12	B02.511.306	8	B02.710.302	17
B02.112.114	14	B02.212.307	12	B02.511.307	8	B02.710.304	17
B02.112.115	14	B02.212.308	12	B02.511.308	8	B02.710.305	17
B02.112.116	14	B02.212.309	12	B02.511.309	8	B02.710.306	17
B02.112.117	14	B02.212.317	12	B02.511.310	8	B02.710.307	17
B02.112.300	11	B02.212.318	12	B02.511.312	8	B02.710.308	17
B02.112.301	11	B02.254.901	26	B02.511.313	8	B02.710.309	17
B02.112.302	11	B02.254.902	26	B02.665.901	27	B02.710.310	17
B02.112.304	11	B02.254.903	26	B02.665.902	27	B02.710.311	17
B02.112.305	11	B02.254.904	26	B02.665.903	27	B02.710.312	17
B02.112.306	11	B02.254.905	26	B02.665.904	27	B02.710.313	17
B02.112.307	11	B02.254.906	26	B02.666.101	30	B02.711.301	15
B02.112.308	11	B02.254.907	26	B02.666.102	30	B02.711.302	15
B02.112.309	11	B02.254.908	26	B02.666.103	30	B02.711.303	15
B02.112.311	11	B02.254.909	26	B02.666.104	30	B02.711.304	15
B02.112.316	11	B02.254.910	26	B02.666.105	30	B02.711.305	15
B02.112.317	11	B02.254.911	26	B02.666.106	30	B02.711.306	15
B02.112.318	11	B02.254.912	26	B02.666.107	30	B02.711.307	15
B02.112.319	11	B02.254.913	26	B02.666.108	30	B02.711.308	15

1.6/5.6 CONNECTORS

PART NUMBER - PAGE REFERENCE CHART



PART NUMBER	PAGE	PART NUMBER	PAGE	PART NUMBER	PAGE
B02.711.309	15	B02.731.010	24	B02.B02.108	45
B02.711.310	15	B02.732.001	25	B02.B02.109	45
B02.711.312	15	B02.732.002	25	B02.B02.110	45
B02.711.316	15	B02.732.003	25	B02.B02.111	45
B02.711.317	15	B02.732.004	25	B02.B02.112	45
B02.712.101	22	B02.732.005	25	B02.B02.113	45
B02.712.102	22	B02.732.006	25	B02.B02.114	45
B02.712.103	22	B02.741.001	19	B02.B02.115	45
B02.712.104	22	B02.741.002	19	B02.B02.116	45
B02.712.105	22	B02.741.302	16	B02.B02.117	45
B02.712.106	22	B02.741.303	16	B02.B02.118	45
B02.712.108	22	B02.741.304	16	B02.B02.119	45
B02.712.109	22	B02.741.305	16	B02.120.110	45
B02.712.110	22	B02.741.306	16		
B02.712.111	22	B02.741.307	16		
B02.712.112	22	B02.741.308	16		
B02.712.113	22	B02.741.309	16		
B02.712.115	22	B02.741.310	16		
B02.712.116	22	B02.821.001	19		
B02.712.117	22	B02.821.002	19		
B02.712.300	20	B02.881.901	36		
B02.712.301	20	B02.881.902	36		
B02.712.302	20	B02.B02.900	44		
B02.712.304	20	B02.B02.901	44		
B02.712.305	20	B02.B02.902	44		
B02.712.306	20	B02.901.900	44		
B02.712.307	20	B02.211.120	40		
B02.712.308	20	B02.211.130	40		
B02.712.309	20	B02.211.220	40		
B02.712.311	20	B02.211.230	40		
B02.712.316	20	B02.221.110	38		
B02.712.317	20	B02.221.120	38		
B02.712.318	20	B02.221.220	38		
B02.712.320	20	B02.224.221	39		
B02.712.321	20	B02.224.222	39		
B02.712.322	21	B02.224.223	39		
B02.712.323	21	B02.224.224	39		
B02.721.001	19	B02.231.110	41		
B02.721.002	19	B02.231.120	41		
B02.721.003	19	B02.231.121	41		
B02.721.201	18	B02.231.210	41		
B02.721.202	18	B02.231.211	41		
B02.721.203	18	B02.234.220	42		
B02.721.204	18	B02.241.120	43		
B02.721.205	18	B02.241.121	43		
B02.721.206	18	B02.241.210	43		
B02.721.207	18	B02.311.008	46		
B02.721.208	18	B02.311.016	46		
B02.731.001	23	B02.B02.101	45		
B02.731.002	23	B02.B02.102	45		
B02.731.004	23	B02.B02.103	45		
B02.731.005	23	B02.B02.104	45		
B02.731.006	23	B02.B02.105	45		
B02.731.008	24	B02.B02.106	45		
B02.731.009	24	B02.B02.107	45		



BELCO S.p.A.: Via Lodi, 86 - 21042 Caronno Pertusella (VA) - Italy
tel. ++39 02 963981 - fax ++39 02 96398400
<http://www.belcoproducts.it> - e-mail: info@belcoproducts.it