



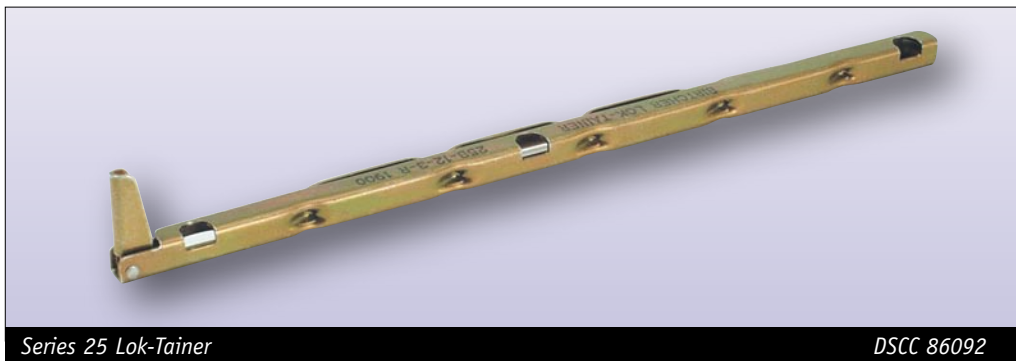


**FEATURES**

|   |   |
|---|---|
| Relative Clamping Force*  |  |
| Relative Retention Force*   |  |
| Relative Thermal Resistance*  |  |
| Relative Price  |  |
| *For mechanical and thermal performance data see the Technical Applications section pages 77-94 |   |



Series 25 Lok-Tainer

DSCC 86092

**MATERIAL**

**HOUSING**

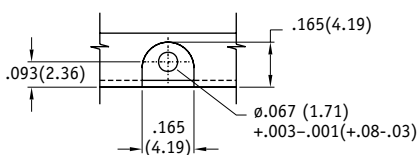
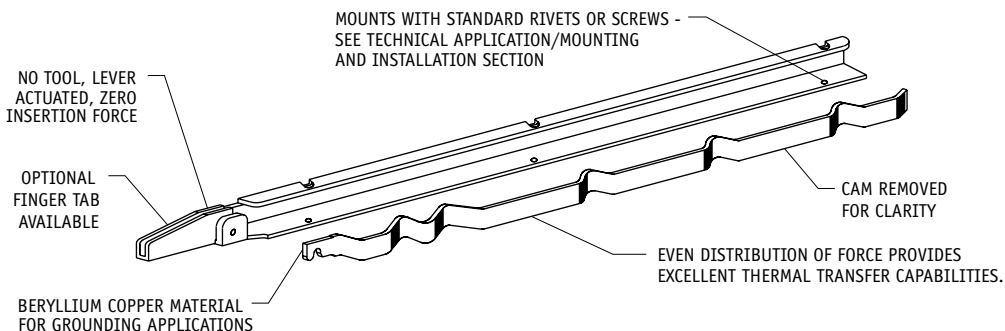
.025 (.64) thick Beryllium Copper or  
.024 (.61) thick Cold Rolled Steel

**CAM:** Beryllium Copper

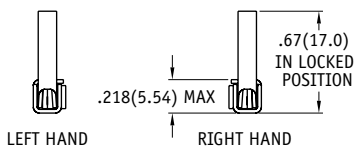
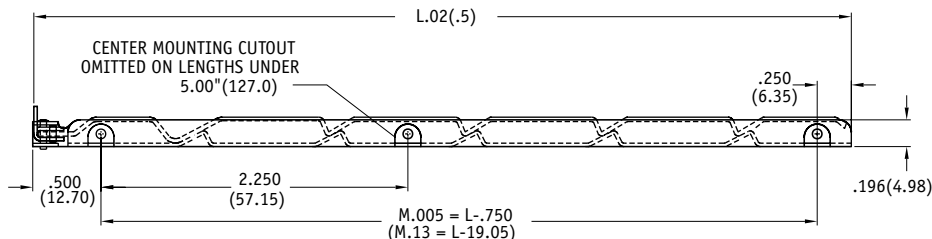
**LEVER**

Steel  
Note: Beryllium Copper lever furnished when housing is unplated.

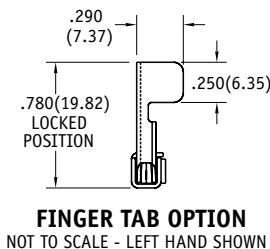
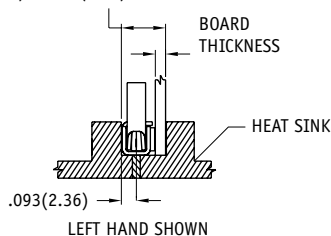
**COLD WALL APPLICATIONS  
MODERATE THERMAL, SHOCK & VIBRATION APPLICATIONS**



**MOUNTING HOLE DETAIL**  
NOT TO SCALE



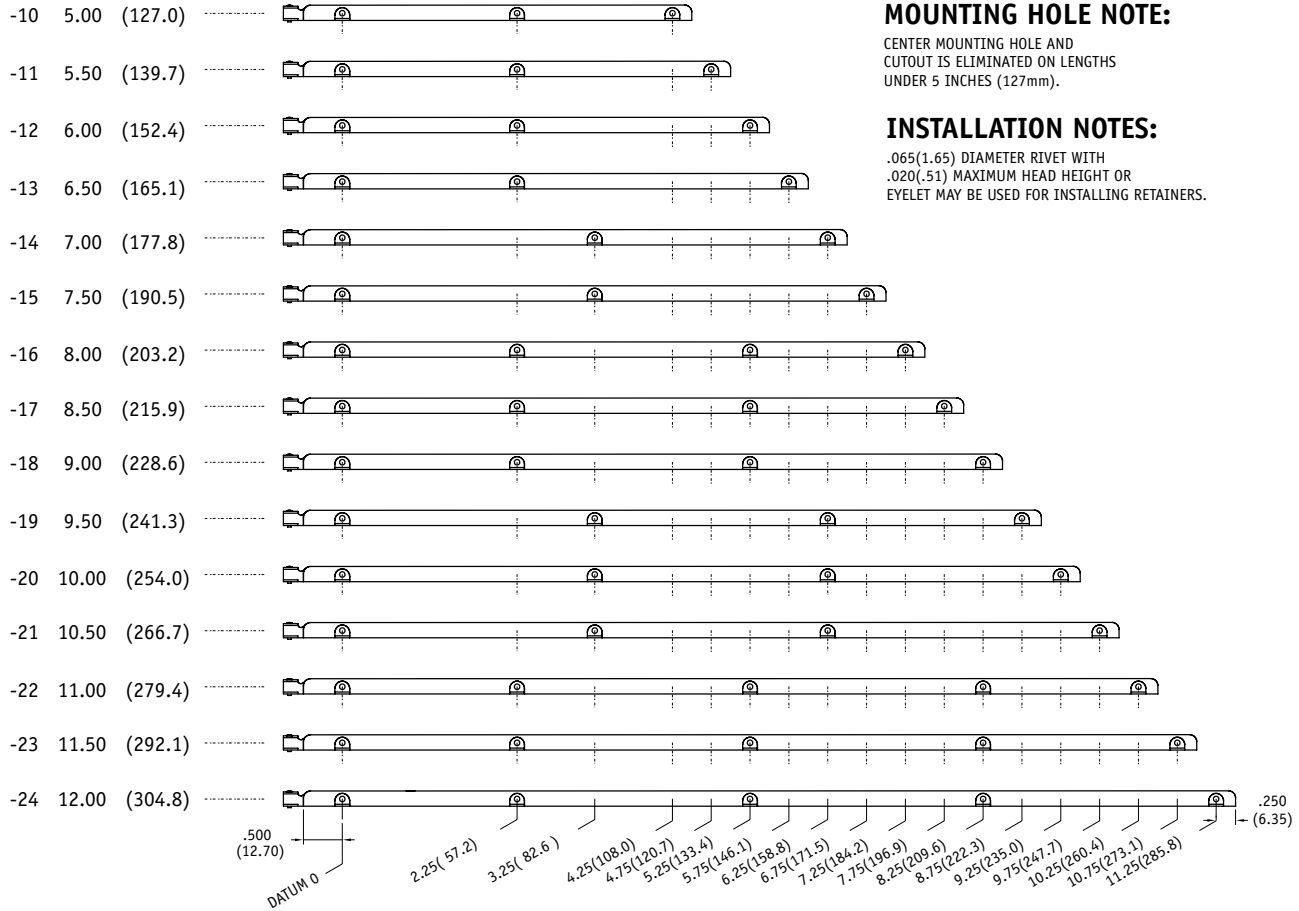
TOTAL GROOVE WIDTH  
.005(.01) = .211(5.36) + PCB THICKNESS



**NOTE ON DIMENSIONS:**  
ENGLISH LISTED FIRST  
FOLLOWED BY METRIC  
IN PARENTHESES

**TOLERANCES:**  
UNLESS OTHERWISE SPECIFIED  
.XXX(.XX)=.01(.25)  
.XX (.X) =.02(.5)

## MOUNTING HOLE DIMENSIONS 25 SERIES



### MOUNTING HOLE NOTE:

CENTER MOUNTING HOLE AND CUTOUT IS ELIMINATED ON LENGTHS UNDER 5 INCHES (127mm).

### INSTALLATION NOTES:

.065(1.65) DIAMETER RIVET WITH .020(.51) MAXIMUM HEAD HEIGHT OR EYELET MAY BE USED FOR INSTALLING RETAINERS.

NOTE: -6 (3.00 INCHES) THRU -9 (4.50 INCHES) MOUNTING HOLE DIMS AS PER .500 (12.70) DATUM AND .250 (6.35) REF AS NOTED ABOVE.

### Part Number Code

Series 25 Lok-Tainer Lever Actuated

#### Finger Tab

Finger tab \_\_\_\_\_ T  
None \_\_\_\_\_ [Blank]

#### Housing Material

Select from Materials Table ② \_\_\_\_\_

#### Length

In 1/2" increments \_\_\_\_\_ -6 (3") thru -24 (12")  
In 12.7mm increments \_\_\_\_\_ -6 (76.2mm) thru -24 (304.8mm)

#### Finish

Select dash number from Finish Table ① \_\_\_\_\_

#### Lever Action

Left hand (see reference diagram on pg.28) \_\_\_\_\_ L  
Right hand (see reference diagram on pg.28) \_\_\_\_\_ R

### Part Number Code example: T25B-12-4-L

Series 25 Lever Actuated Lok-Tainer, with Finger Tab option, Beryllium Copper housing, 6.0 in (152.4 mm) long, copper plate finish, and left hand lever action.

### ① FINISH TABLE

CONTACT FACTORY FOR OTHER FINISHES

| DASH # | FINISH (see pg.9 for RoHS Compliance)                                 |
|--------|---|
| NONE   | SILVER PLATE PER QQ-S-365, TYPE III, GRADE A                          |
| -1     | NONE  |
| -2     | EBANOLPER MIL-F-495 FOR BERYLLIUM COPPER<br>PER MIL-C-13924 FOR STEEL |
| -4     | COPPER PLATE PER MIL-C-14550, CLASS 2                                 |
| -5     | GOLD PLATE PER MIL-G-45204, TYPE 1, CLASS 1                           |
| -6     | NICKEL PLATE PER QQ-N-290, CLASS 1, GRADE G, BRIGHT                   |
| -7     | ZINC PLATE CLEAR CHROMATE, PER ASTM-B-633, Fe/Zn 8                    |
| -8     | ZINC PLATE YELLOW CHROMATE, PER ASTM-B-633 Fe/Zn 8                    |

NOTE: No finish (-1) not available with "S" Steel material

### ② MATERIALS TABLE

| CODE LETTER | MATERIAL                                  | WEIGHT                     |
|-------------|---|----------------------------|
| B           | BERYLLIUM COPPER, 1/4H<br>PER, ASTM-B-194 | .087 oz/in<br>(1.97 gm/cm) |
| S           | STEEL<br>PER, ASTM-A-366                  | EITHER MATERIAL            |

FOR MECHANICAL AND THERMAL PERFORMANCE  
SEE THE TECHNICAL APPLICATIONS SECTION PAGES 77-94