

FEATURES

- Designed with or without Flared Entry
- Choice of four board thicknesses
- Choice of three materials
- Choice of eight finishes
- Spring design to clamp PC boards
- 35-5 offers special 1.37" short length

APPLICATIONS

- Where metal guides are required
- Moderate heat transfer and vibration
- Electrically and thermally conductive
- Install with rivets, screws or adhesives

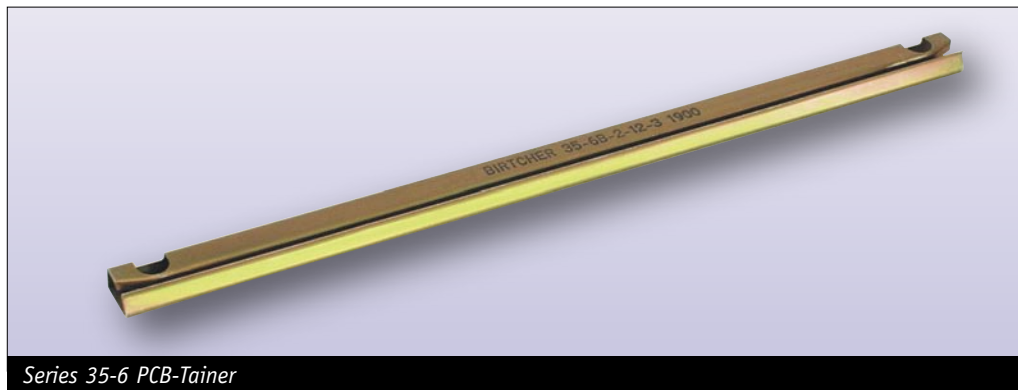
For mechanical and thermal performance data see the Technical Applications section pages 77-94

MATERIAL

.008(.20) thick Beryllium Copper or Stainless Steel

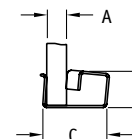
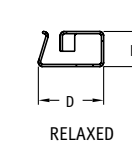
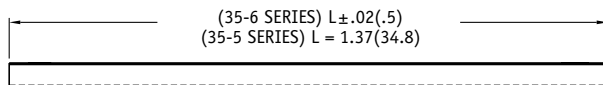
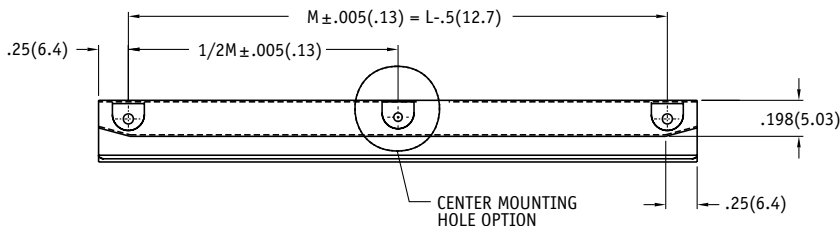
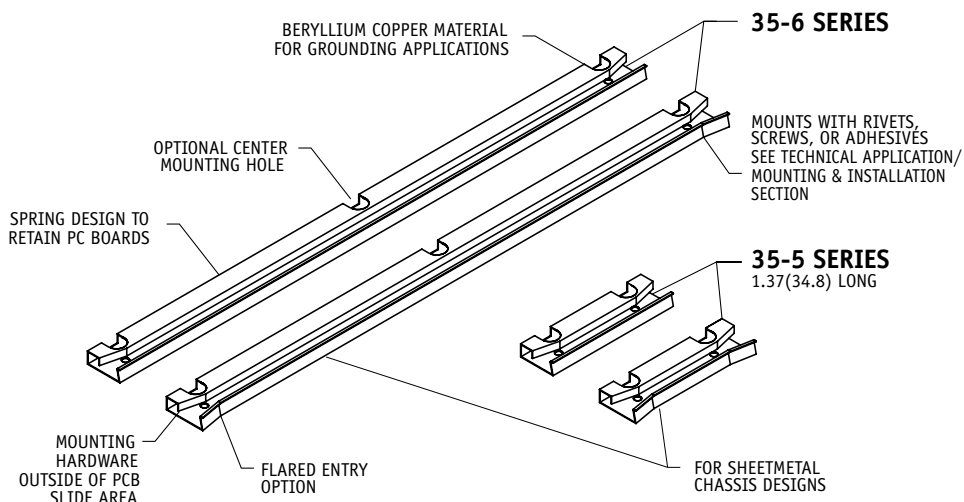
WEIGHT

.033 oz/in
(0.37 gm/cm)
Either material



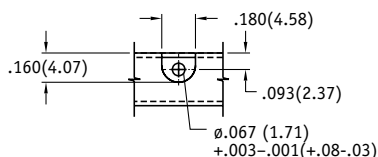
Series 35-6 PCB-Tainer

**HEAT & VIBRATION APPLICATIONS
ELECTRICALLY & THERMALLY CONDUCTIVE**

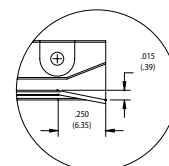


NOTE ON DIMENSIONS:
ENGLISH LISTED FIRST
FOLLOWED BY METRIC
IN PARENTHESES

TOLERANCES:
UNLESS OTHERWISE SPECIFIED
.XXX(.XX) = ±.01(.25)
.XX(.X) = ±.02(.5)



MOUNTING HOLE DETAIL



FLARED ENTRY OPTION DETAIL

1 FINISH TABLE

CONTACT FACTORY FOR OTHER FINISHES

DASH #	FINISH (see pg.9 for RoHS Compliance)
NONE	SILVER PLATE PER QQ-S-365, TYPE III, GRADE A
-1	NONE
-2	EBANOLPER MIL-F-495 FOR BERYLLIUM COPPER
-4	COPPER PLATE PER MIL-C-14550, CLASS 2
-5	GOLD PLATE PER MIL-G-45204, TYPE 1, CLASS 1
-6	NICKEL PLATE PER QQ-N-290, CLASS 1, GRADE G, BRIGHT
-7	ZINC PLATE CLEAR CHROMATE, PER ASTM-B-633, Fe/Zn 8
-8	ZINC PLATE YELLOW CHROMATE, PER ASTM-B-633 Fe/Zn 8

2 MATERIALS TABLE

CODE LETTER	MATERIAL
B	BERYLLIUM COPPER, 1/4H PER, ASTM-B-194
BH	BERYLLIUM COPPER, 1/4 HT PER QQ-C-533, HEAT TREATED
CR	STAINLESS STEEL, TYPE 301 COND 1/4 H PER AMS 5517

FOR MECHANICAL AND THERMAL PERFORMANCE SEE THE TECHNICAL APPLICATIONS SECTION PAGES 77-94

3 DIMENSION TABLE

-4 ONLY AVAILABLE ON 35-6 & 35F-6 SERIES

DASH #	A BOARD THICKNESS	B	C MAX	D	E
-1	.031(0.79)	.180(4.58)	.330(8.39)	.298(7.57)	.156(3.97)
-2	.063(1.60)	.180(4.58)	.330(8.39)	.298(7.57)	.156(3.97)
-3	.094(2.39)	.180(4.58)	.330(8.39)	.298(7.57)	.156(3.97)
-4	.125(3.18)	.180(4.58)	.370(9.40)	.330(8.39)	.156(3.97)

Part Number Code

Series 35 PCB Tainer

35 x x -x x -x -x -x

Center Mounting Hole

Center Mounting Hole _____ C
None _____ [Blank]

Flared Entry

Flared Entry: _____ F
None: _____ [Blank]

Series

For 35-5 _____ 5
For 35-6 _____ 6

Material

Select Code Letter from Material Table 2: _____

Board Thickness

Select from Board Thickness Table 3: _____

Length (35-6 only)

In 1/2" increments: _____ -4 = 2" thru -12 = 6"
In 12.7mm increments: _____ -4 = 50.8mm thru -12 = 152.4mm

Finish

Select from Finish Table 1: _____
No dash number required for CR material. Stainless steel parts are passivated only.

Part Number Code examples:

35F-6B-3-10-6

35 Series PCB-Tainer, Beryllium Copper with Flared Entry, .094(2.39) board thickness, 5.00 in(127mm) long, Nickel Plate finish.

35-5B-2-5

35 Series PCB-Tainer, Beryllium Copper, .063(1.60) board thickness, 1.37 in (34.8mm) long, Gold Plate finish.