

FEATURES

- Available with Flared Entry
- Choice of three materials
- Choice of eight finishes
- Spring design to clamp PC boards

APPLICATIONS

- Where metal guides are required
- Moderate heat transfer and vibration
- Electrically and thermally conductive
- Install with rivets, screws or adhesives
- For use with heat sinks

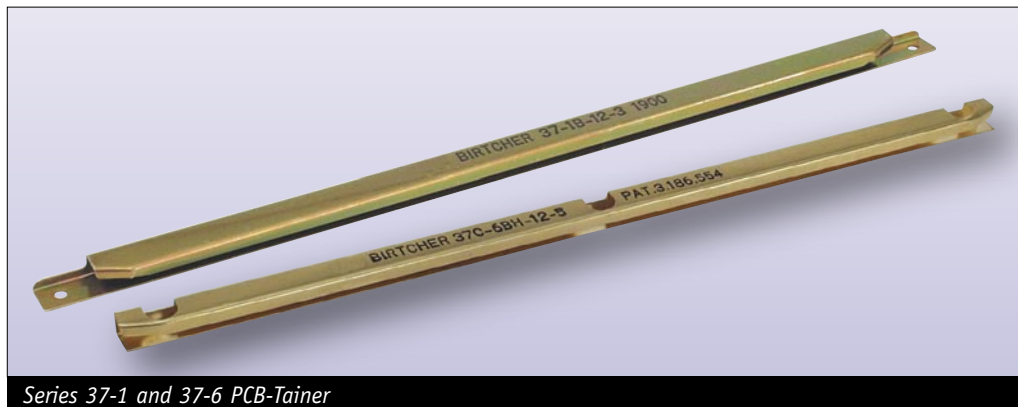
For mechanical and thermal performance data see the Technical Applications section pages 77-94

MATERIAL

.008(.20) thick Beryllium Copper or Stainless Steel

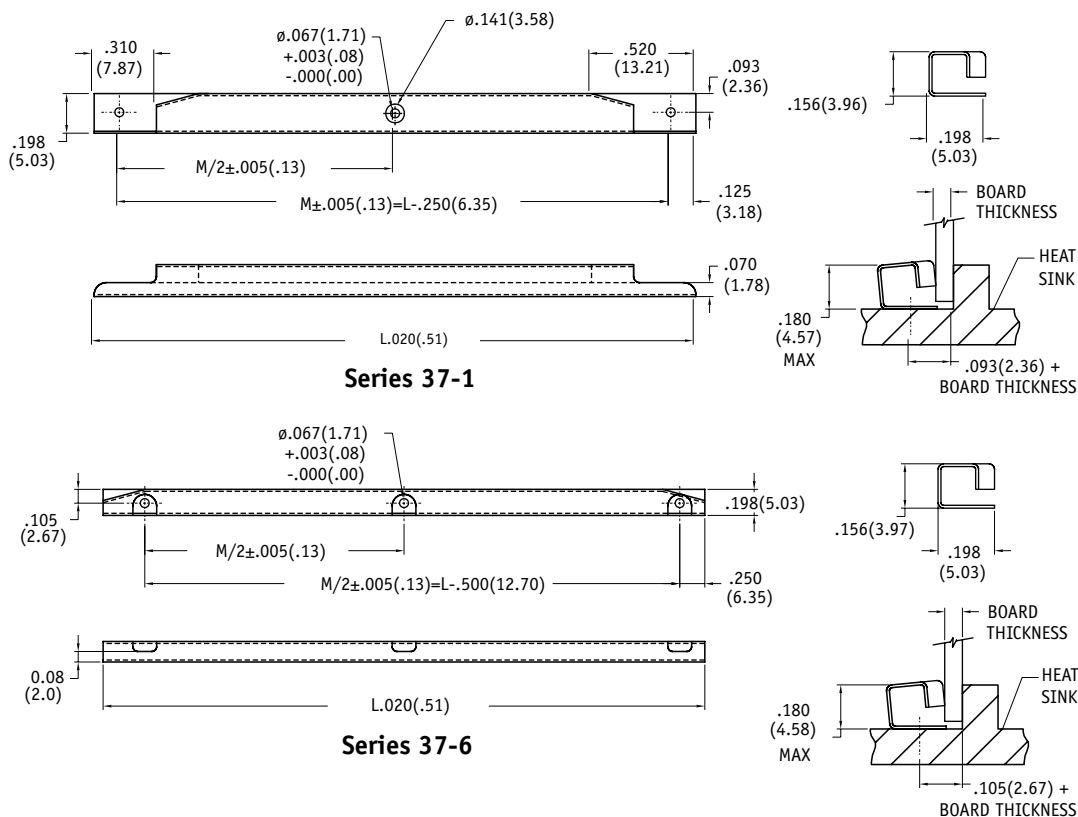
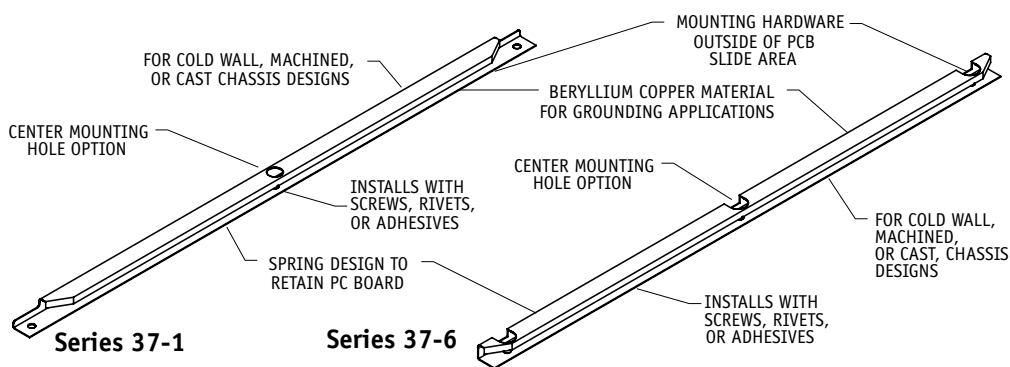
WEIGHT

.033 oz/in
(0.37 gm/cm)
Either material



Series 37-1 and 37-6 PCB-Tainer

**HEAT & VIBRATION APPLICATIONS
ELECTRICALLY & THERMALLY CONDUCTIVE**



NOTE ON DIMENSIONS:
ENGLISH LISTED FIRST
FOLLOWED BY METRIC
IN PARENTHESES

TOLERANCES:
UNLESS OTHERWISE SPECIFIED
.XXX(.XX)±.01(.25)
.XX (.X) ±.02(.5)

① FINISH TABLE

CONTACT FACTORY FOR OTHER FINISHES

DASH #	FINISH (see pg.9 for RoHS Compliance)
NONE	SILVER PLATE PER QQ-S-365, TYPE III, GRADE A
-1	NONE
-2	EBANOL PER MIL-F-495 FOR BERYLLIUM COPPER
-4	COPPER PLATE PER MIL-C-14550, CLASS 2
-5	GOLD PLATE PER MIL-G-45204, TYPE 1, CLASS 1
-6	NICKEL PLATE PER QQ-N-290, CLASS 1, GRADE G, BRIGHT
-7	ZINC PLATE CLEAR CHROMATE, PER ASTM-B-633, Fe/Zn 8
-8	ZINC PLATE YELLOW CHROMATE, PER ASTM-B-633 Fe/Zn 8

② MATERIALS TABLE

CODE LETTER	MATERIAL
B	BERYLLIUM COPPER, 1/4H PER, ASTM-B-194
BH	BERYLLIUM COPPER, 1/4 HT PER QQ-C-533, HEAT TREATED
CR	STAINLESS STEEL, TYPE 301 COND 1/4 H PER AMS 5517

FOR MECHANICAL AND THERMAL PERFORMANCE SEE THE TECHNICAL APPLICATIONS SECTION PAGES 77-94

Part Number Code

Series 37 PCB-Tainer 37 x -x x -x -x

Center Mounting Hole:
 Center Mounting Hole option: _____ C
 None: _____ [Blank]

Dash Number
 _____ 1 or 6

Material
 Select code letter from Material Table ②: _____

Length
 In 1/2" increments: _____ -2 = 1" thru -12 = 6"
 In 12.7mm increments: _____ -2 = 25.4mm thru -12 = 152.4mm

Finish
 Select from Finish Table ①: _____
 No dash number required for CR material. Stainless steel parts are passivated only.

Part Number Code examples:

37-1CR-12

Series 37-1 PCB-Tainer, stainless steel, 6.00 in (152.4mm) long, passivated

37C-6BH-10-8

Series 37-6 PCB-Tainer, with center mounting hole option, heat-treated beryllium copper, 5.00 in (127mm) long, zinc plate yellow chromate finish.